

ព្រះរាជាណាចក្រកម្ពុជា
KINGDOM OF CAMBODIA
ជាតិ សាសនា ព្រះមហាក្សត្រ
NATION RELIGION KING



ធនាគារជាតិ នៃ កម្ពុជា
NATIONAL BANK OF CAMBODIA

ព័ត៌មានស្ថិតិសេដ្ឋកិច្ច និងរូបិយវត្ថុ
ECONOMIC AND MONETARY STATISTICS

លេខ ៣៣៣- ឆ្នាំទី២៩
ខែកក្កដា ឆ្នាំ២០២១
SERIES No. 333 – 29th YEAR
JULY 2021

Contents



Page

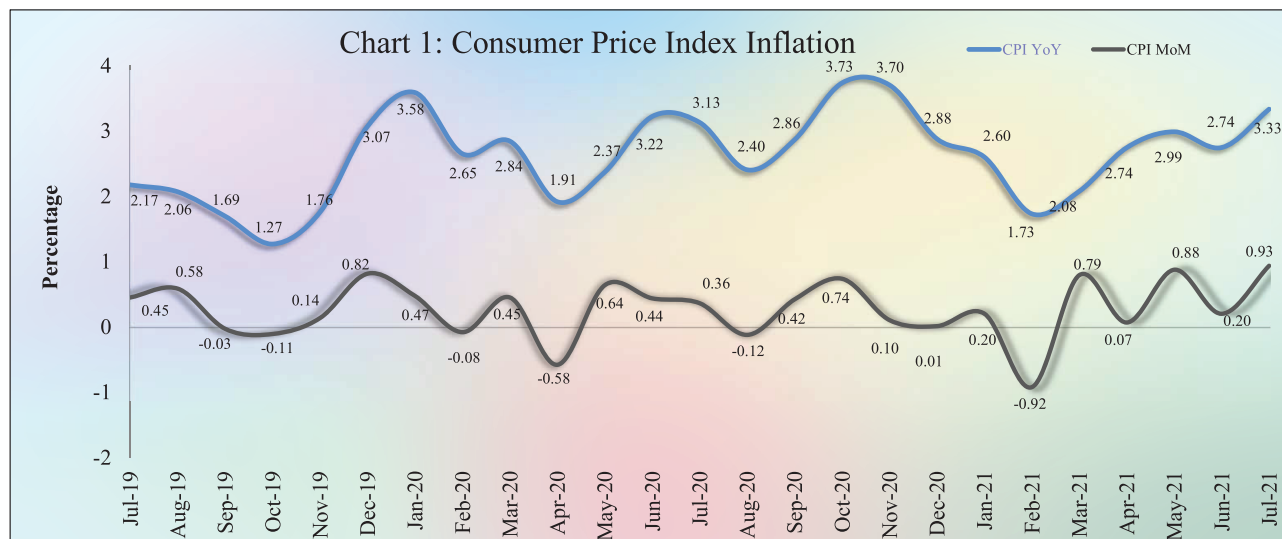
- Introduction.....	1
- Exchange Rate.....	1
- Money Supply.....	1
- Net Domestic Assets of the Depository Corporations.....	2
- Net Foreign Assets of the Depository Corporations	2
- Other Depository Corporations Survey.....	3
- Other Financial Corporations Survey.....	3
- Interest Rates on Loans and Deposits	3
- Foreign Tourist Arrivals.....	4
- International Trade in Goods	4
Table 1 : Consumer Price Index and Inflation Rate.....	6
Table 2 : Consumer Items Showing Price Increased in July 2021	7
Chart 1 : Consumer Price Index.....	8
Chart 2 : Weight of All Group Indices in Consumer Basket	8
Table 3 : Gross Domestic Product	9
Chart 3 : GDP by Economic Activity (At Constant 2000 Prices).....	9
Chart 4 : GDP by Economic Activity (At Current Prices).....	9
Table 4 : Approved Investment Projects by Sectors	10
Chart 5 : Investment Fixed Assets by Sectors	10
Chart 6 : Numbers of Investment Projects by Sectors	10
Table 5 : Approved Investment Projects by Major Countries.....	11
Table 6 : Daily Exchange Rate in July 2021 (KHR/USD).....	12
Table 7 : Monthly Exchange Rate (KHR/USD, End-Period)	13
Chart 7 : Trend of Monthly Exchange Rate.....	13
Table 8 : The Value of KHR Against Other Currencies (Official Buying Rates, End-Period)	14
Table 9 : Deposit Money Bank's Interest Rates on Deposits and Loans in KHR.....	15
Table 10: Central Bank Survey.....	16
Table 11: Other Depository Corporations Survey	17
Table 12: Depository Corporations Survey	18
Table 13: Other Financial Corporations Survey	19
Table 14: Financial Corporations Survey	20
Chart 8 : Financial Corporations Survey	21
Chart 9 : Monetary Aggregates Components.....	21
Table 15: Credit Granted by Deposit Money Banks Classified by Industry.....	22
Chart 10: Credit Granted by Deposit Money Banks Classified by Industry.....	22
Table 16: Monthly Change of Credit Granted by Deposit Money Banks Classified by Industry.....	23
Table 17: Deposits with Deposit Money Banks.....	24
Chart 11: Deposits with Deposit Money Banks Classified by Currency, as of July 2021 (% of Total Deposits)	24
Table 18: Monthly Change of Deposits with Deposit Money Banks	25
Chart 12: Deposits in KHR Classified by Type, as of July 2021 (% of Total KHR Deposits).....	26
Chart 13: Deposits in Foreign Currency Classified by Type, as of July 2021 (% of Total FCD)	26
Table 19: Credit Granted by Micro-Finance Institutions and Non-Government Organizations.....	27
Table 20: KHR-Denominated Checks Clearing Through Clearing House	28
Table 21: USD-Denominated Checks Clearing Through Clearing House	29
Table 22: Visitor Arrivals in Cambodia.....	30
Table 23: Cambodia's Imports and Exports	31
Table 24: The Banking System in Cambodia	32-33

Introduction

Overall consumer price inflation in July 2021 accelerated over the previous month, and the exchange rate depreciated against US dollar. During this period, financial intermediation of the banking sector, reflected by credit to private sector and resident's deposit, continued to increase. In the meantime, international trade in goods showed a decrease in deficit.

Consumer Price Index

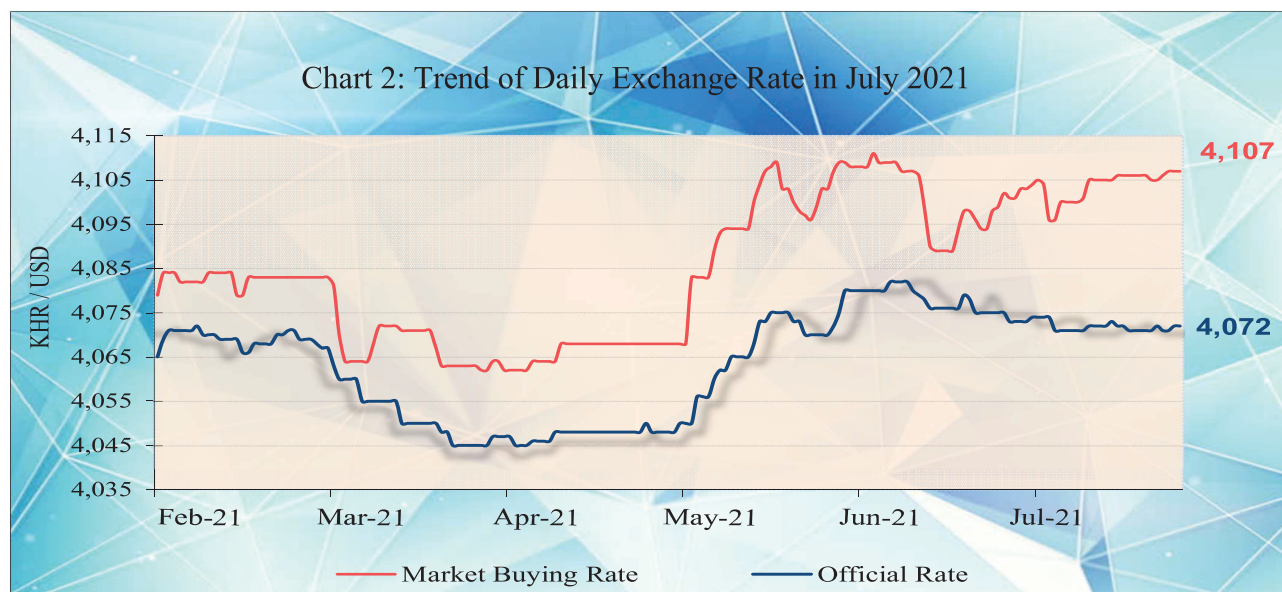
The consumer price inflation in Phnom Penh (month-on-month) accelerated to 0.93% in July 2021 from 0.2% in June, in which eleven out of twelve group indexes increased, and other one group remained stable.



During the same period, the year-on-year percentage change of the CPI for all items increased fairly to 3.33% in July from 2.74% in June 2021, which was mainly due to the increase in oil and food price.

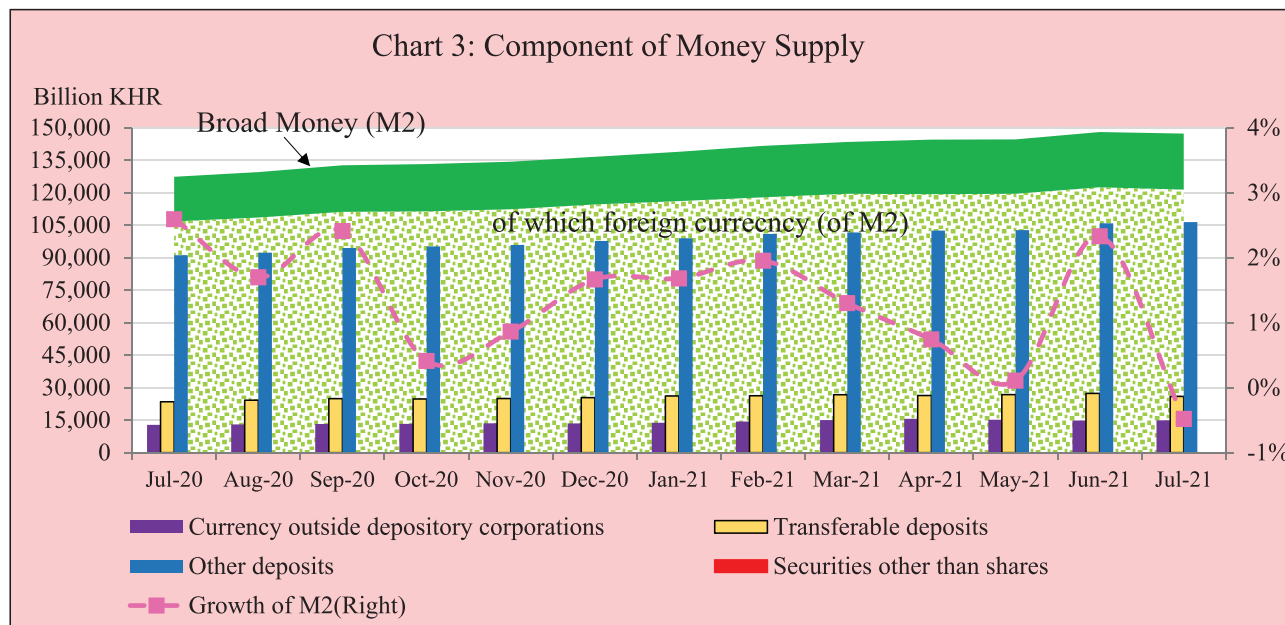
Exchange Rate

The exchange rate (market buying rate) was KHR 4,107 per USD in July 2021, depreciated by 0.12% over June.



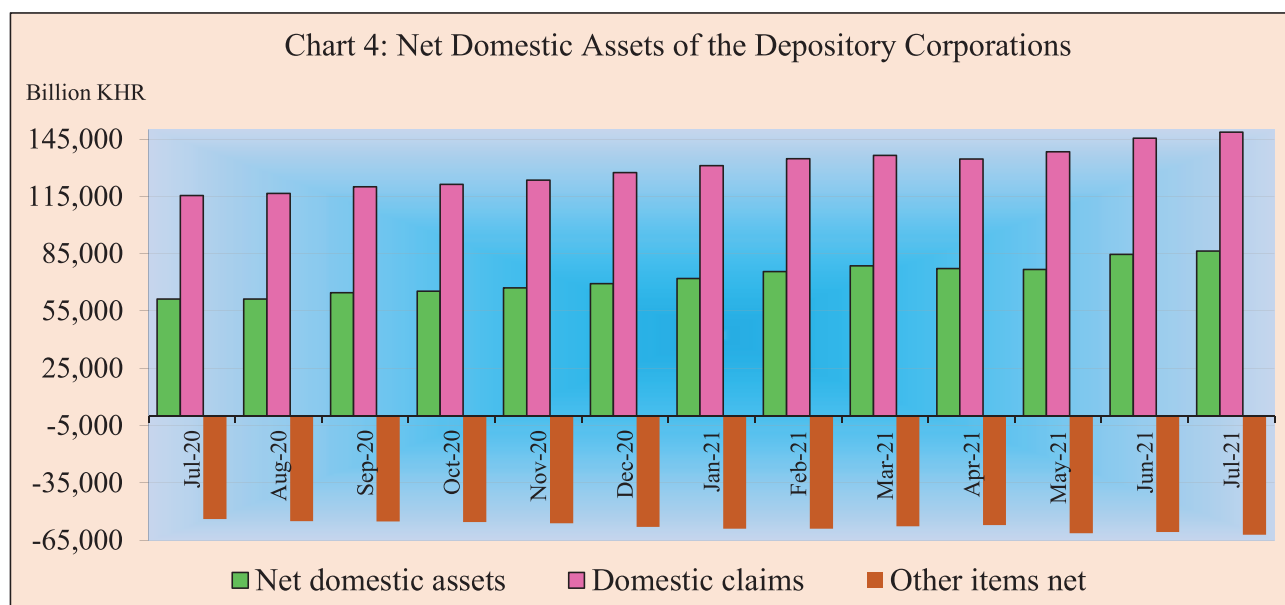
Money Supply

Broad money (M2) decreased to KHR 147,263.7 billion in July 2021, down by 0.5% compared to June. The main components of M2 showed that transferable deposits declined by 5%, while currency outside depository corporations and other deposits increased by 0.9% and 0.5%, respectively.



Net Domestic Assets of the Depository Corporations

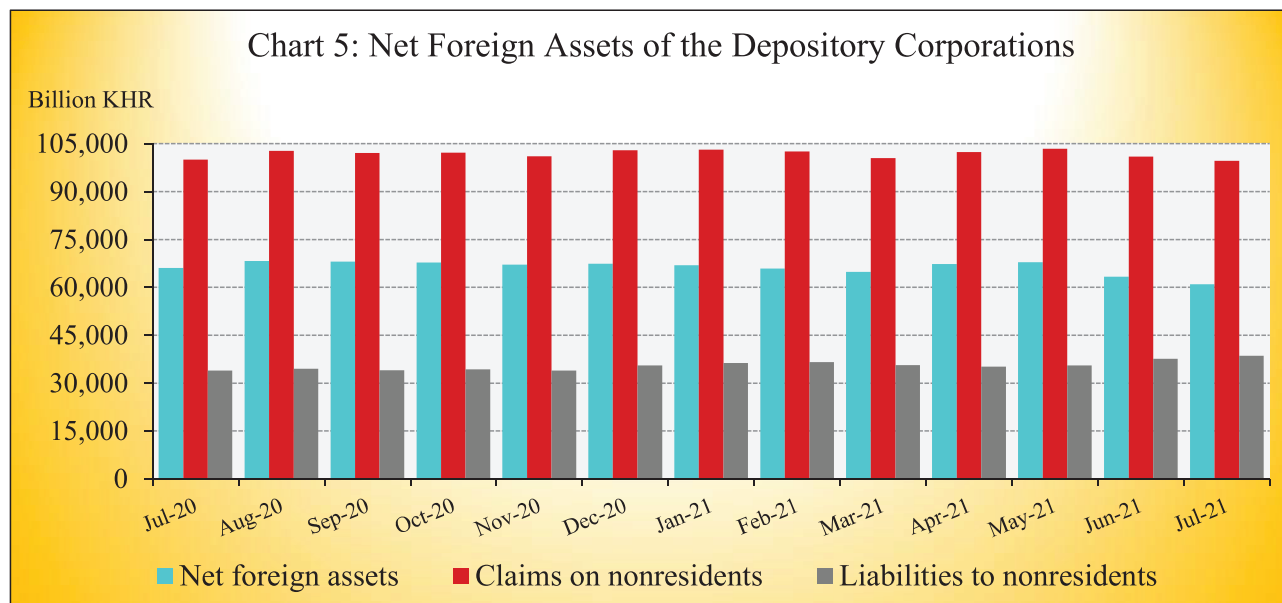
Net domestic assets of the depository corporations continued to increase to KHR 86,241.3 billion in July 2021, up by 1.9% compared to June. This was due to the increase of 2.1% in net domestic credit while other items net decreased by 2.4%.



The increase in domestic credit was due to the increases of 3.2%, 2.1%, and 1.4% in net credit to nonfinancial public sector, credit to other financial corporations, and credit to private sector, respectively. The decrease in other items net was mainly due to an increase of 2.7% in capital accounts, while others increased only by 0.8%.

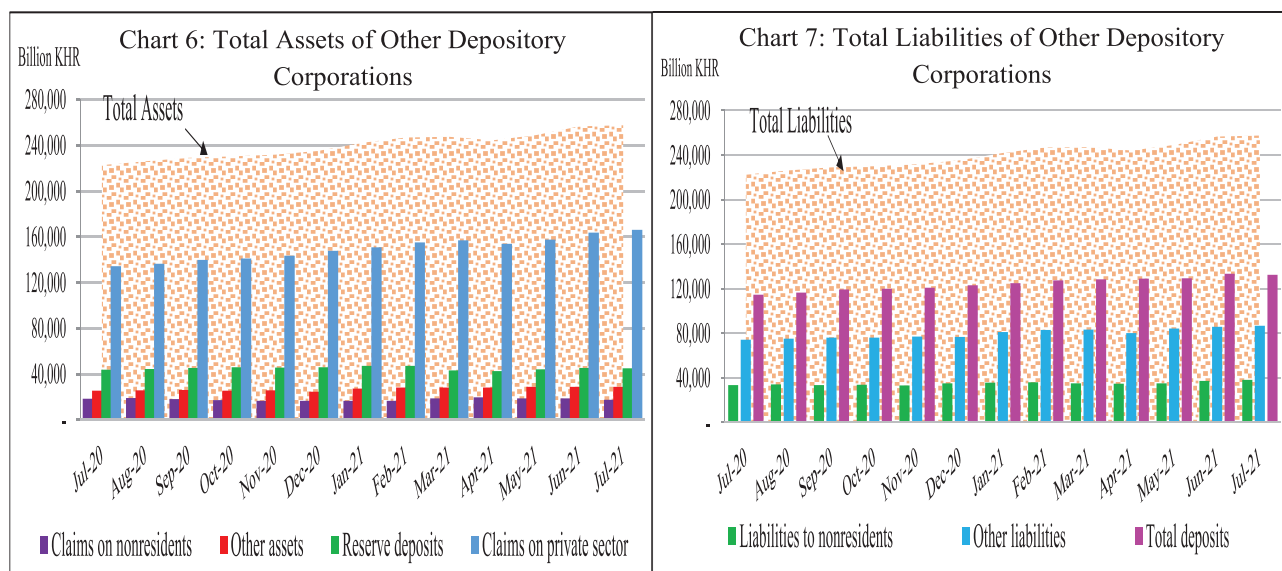
Net Foreign Assets of the Depository Corporations

Net foreign assets of the depository corporation continued to decrease to KHR 61,022.4 billion in July 2021, down by 3.7% from June. This was due to the decrease of 5.5% and 0.5% in other foreign assets and gross reserve, respectively along with an increase of 2.4% in foreign liabilities.



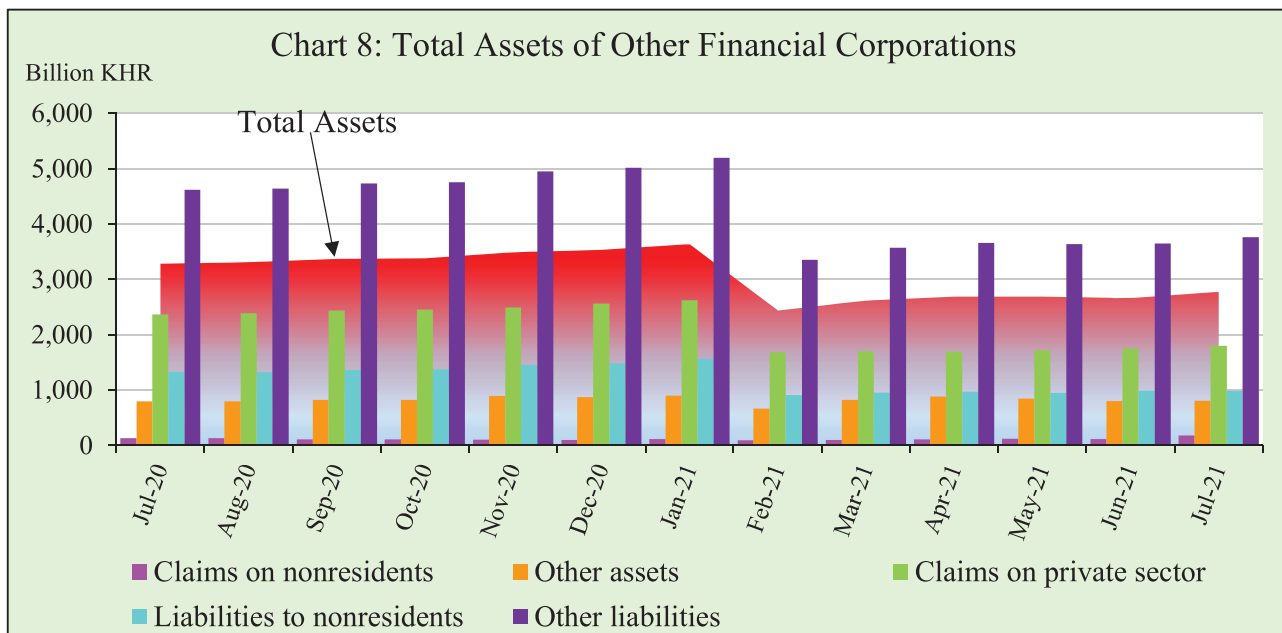
Other Depository Corporations Survey

Total assets of other depository corporations (including commercial banks and microfinance deposit-taking institutions) were KHR 257,530.8 billion, increased by 0.4% in July 2021 compared to the previous month.



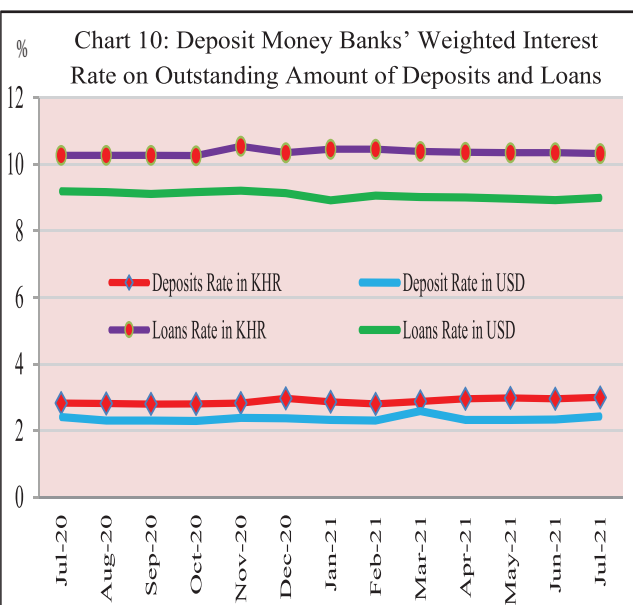
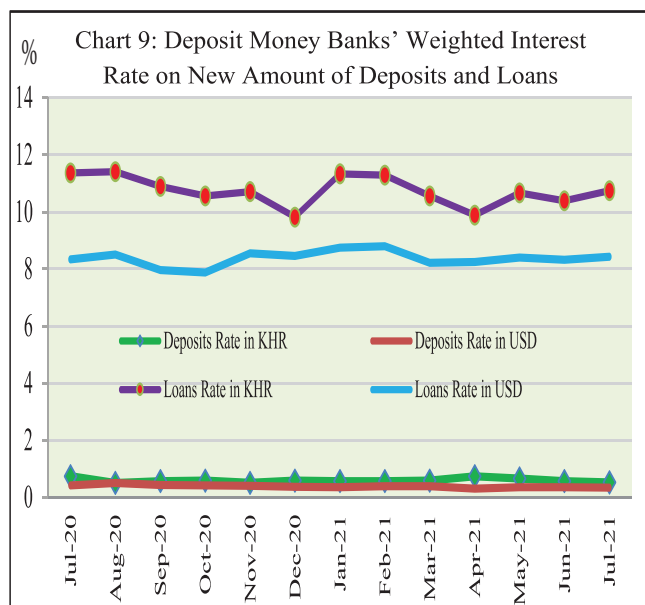
Other Financial Corporations Survey

Total assets of other financial corporations were KHR 2,777.6 billion, up by 4.4% in July 2021 compared to June.



Interest Rates on Deposits and Loans

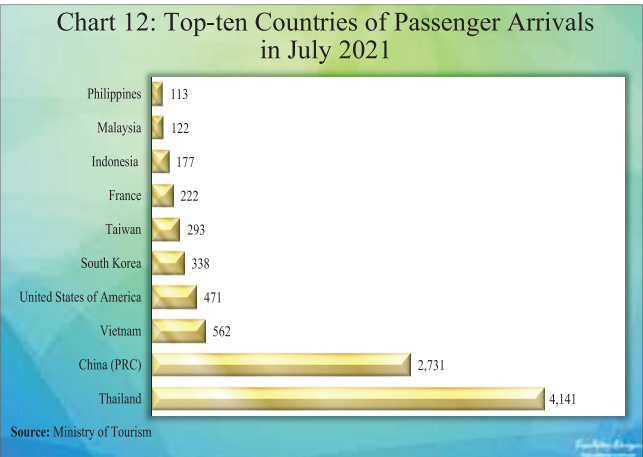
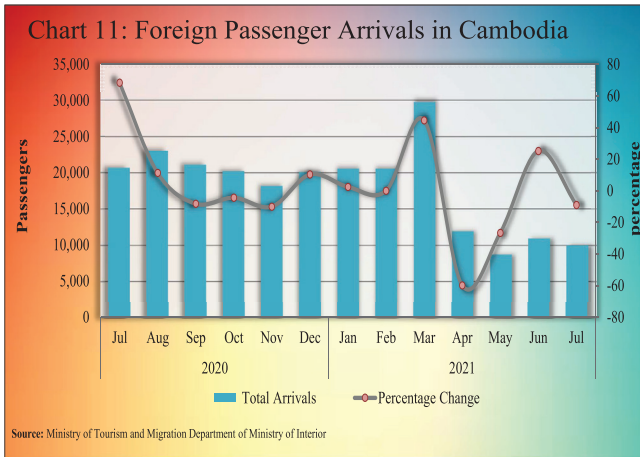
Interest rate on deposits and loans of banking sector in July 2021 showed that the (new amount) weighted average interest rate on deposit in KHR continued to decrease by 0.04% to 0.52%, and deposit in USD continued to decrease by 0.01% to 0.34%. At the same time, the weighted average interest rate on loan in KHR increased by 0.35% to 10.74%, and loan in USD increased by 0.11% to 8.43%.



Foreign Tourist Arrivals

In July 2021, total number of passenger arrivals was 9,984, decreased by 8.9% after the increase of 25.2% in the previous month. The main purposes of the passenger arrivals in Cambodia were for business and professional, and vacation, which were accounted for 54.1% and 40.6% of the total, respectively.

Most of the foreign passengers were from Thailand, China P.R.C., Vietnam, United States of America, South Korea, Taiwan, France, Indonesia, Malaysia, and Philippines.



International Trade in Goods

International trade in goods showed a deficit of KHR 1,668.5 billion (17.5%) in July 2021, following the deficit of KHR 3,967.8 billion (40.4%) in June.



The major components of total exports were Garment, Other Textile Product, Electrical Part, Footwear, Bicycle, Wood Products, Rubber, Rice, Vehicle and Bicycle Part, Fish, and other, and agricultural Products. In addition, the major components of total imports were Gold, Fabric, Oil, Medicine, Equipment Construction, Vehicle, Food and Beverage, Other Electronic Equipment, Garment, Fertilizer, and Steel.

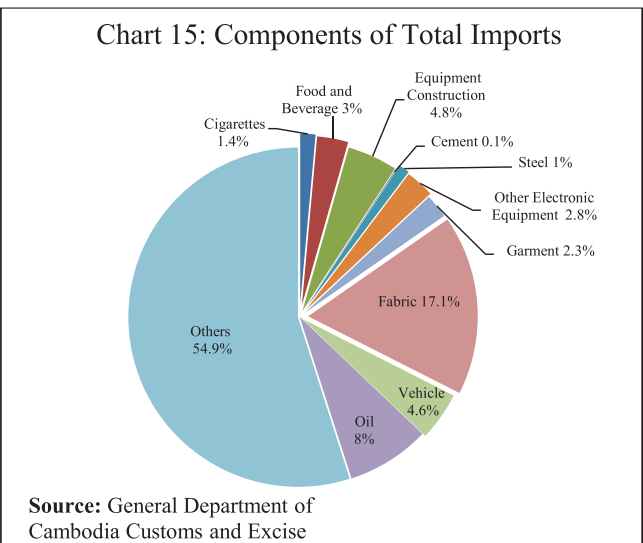
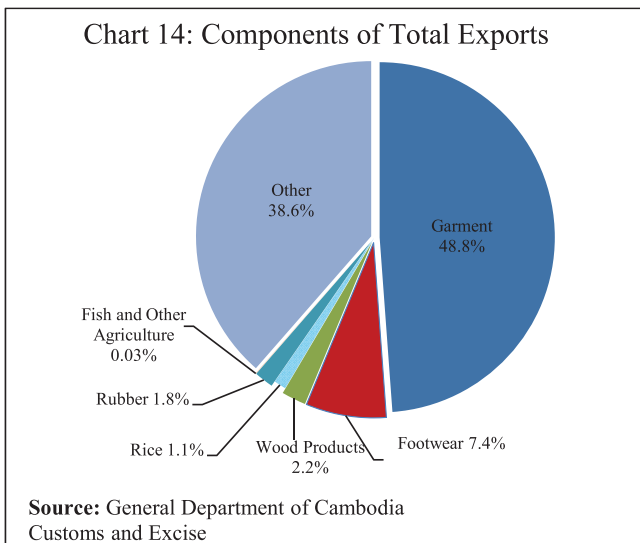


Table 1: Consumer Price Index and Inflation Rate

1. Consumer Price Index (CPI) and Component Indices (Oct-Dec. 2006 = 100)	Mar-21	Apr-21	May-21	Jun-21	Jul-21
CPI (all items)	185.23	185.36	186.98	187.36	189.11
Food and Non-Alcoholic Beverages	229.59	229.64	232.30	231.80	233.81
Alcoholic Beverages, Tobacco and Narcotics	176.95	176.90	176.97	177.09	177.11
Clothing and Footwear	159.64	159.27	160.37	161.85	164.18
Housing, Water, Electricity, Gas and other Fuels	131.05	131.03	131.07	131.87	132.97
Furnishings and Household Maintenance	153.99	154.30	153.89	154.57	155.42
Health	137.22	137.75	138.37	138.92	139.76
Transport	114.29	114.65	115.76	118.58	120.82
Communication	66.45	66.34	66.52	66.46	66.52
Recreation and Culture	120.91	120.38	120.31	120.40	121.10
Education	165.48	165.48	164.91	164.91	164.91
Restaurants	293.37	294.52	298.40	298.66	301.94
Miscellaneous Goods and Services	159.98	159.70	160.22	160.57	162.02
2. Percentage Change in the CPI and its Components					
2.1 Month on Month Change (%)					
CPI (all items)	0.79	0.07	0.88	0.20	0.93
Food and Non-Alcoholic Beverages	1.25	0.02	1.16	-0.22	0.87
Alcoholic Beverages, Tobacco and Narcotics	0.01	-0.03	0.04	0.07	0.01
Clothing and Footwear	0.84	-0.24	0.70	0.92	1.44
Housing, Water, Electricity, Gas and other Fuels	0.27	-0.02	0.03	0.61	0.83
Furnishings and Household Maintenance	0.32	0.20	-0.26	0.44	0.55
Health	0.53	0.39	0.45	0.40	0.61
Transport	0.20	0.31	0.97	2.43	1.89
Communication	-0.53	-0.16	0.27	-0.10	0.09
Recreation and Culture	0.13	-0.44	-0.05	0.07	0.58
Education	0.39	0.00	-0.35	0.00	0.00
Restaurants	0.00	0.39	1.32	0.09	1.10
Miscellaneous Goods and Services	-0.09	-0.18	0.33	0.22	0.90
2.2 Year on Year Change (%)					
CPI (all items)	2.08	2.74	2.99	2.74	3.33
Food and Non-Alcoholic Beverages	2.98	2.19	2.79	2.21	3.11
Alcoholic Beverages, Tobacco and Narcotics	1.39	1.23	1.60	1.57	1.54
Clothing and Footwear	3.69	3.34	3.53	4.18	5.42
Housing, Water, Electricity, Gas and other Fuels	1.68	2.29	2.06	2.70	2.92
Furnishings and Household Maintenance	0.37	0.23	-0.12	0.19	1.47
Health	-0.35	0.39	0.84	1.24	1.98
Transport	0.41	14.20	12.78	12.51	11.41
Communication	-0.85	-0.89	-0.12	-0.31	-0.48
Recreation and Culture	0.59	0.54	0.42	0.51	1.22
Education	0.55	0.55	-0.14	0.00	-0.35
Restaurants	-0.44	0.43	0.48	0.21	0.35
Miscellaneous Goods and Services	6.17	5.13	5.09	4.64	5.13
3. Three-month moving average CPI (All Items)					
Year on Year Change (%)	2.13	2.18	2.60	2.82	3.02
4. Twelve-month moving average CPI (All Items)					
Year on Year Change (%)	2.72	2.78	2.84	2.80	2.81

Source: National Institute of Statistics

Table 2: Consumer Items Showing Price Increased in July 2021

No.	Description	Weight	Index			Percentage Change	
			Jul-20	Jun-21	Jul-21	Monthly	Yearly
1	GASOLINE	4.969	75.22	95.87	100.79	5.1	34.0
2	TOOLS AND EQUIPMENT FOR HOUSE AND GARDEN	0.017	193.20	200.00	209.48	4.7	8.4
3	DIESEL	0.144	83.16	108.74	111.80	2.8	34.4
4	LIQUID FUELS	0.099	143.61	155.60	158.98	2.2	10.7
5	FRUIT VEGETABLES	1.138	305.01	318.29	324.84	2.1	6.5
6	SOLID FUELS	1.475	233.11	241.26	246.03	2.0	5.5
7	LEAF AND STALK VEGETABLES (FRESH)	2.031	214.66	222.73	226.94	1.9	5.7
8	FRESH FRUITS	4.094	229.41	233.45	237.61	1.8	3.6
9	CLOTHING FOR MEN AND BOYS	0.621	151.51	156.94	159.57	1.7	5.3
10	FOOTWEAR	0.641	167.17	174.42	177.25	1.6	6.0
11	FOOD PRODUCTS NEC	1.404	232.76	237.05	240.64	1.5	3.4
12	HOUSEHOLD TEXTILES	0.015	177.96	183.67	186.44	1.5	4.8
13	BREAD	0.173	239.54	237.01	240.56	1.5	0.4
14	CLOTHING FOR WOMEN AND GIRLS	1.065	152.99	160.28	162.59	1.4	6.3
15	ROOT VEGETABLES	0.456	244.63	252.72	256.36	1.4	4.8
16	PROCESSED FISH AND SEAFOOD	1.646	267.41	274.77	278.71	1.4	4.2
17	OTHER APPLIANCES, ARTICLES AND PRODUCTS FOR PERSONAL CARE	0.399	154.29	156.89	159.07	1.4	3.1
18	GAS	2.699	123.50	132.39	134.17	1.3	8.6
19	SUGAR, JAM, HONEY, CHOCOLATE AND CONFECTIONERY	1.489	147.91	151.79	153.83	1.3	4.0
20	PERSONAL EFFECTS N.E.C	0.876	191.30	206.99	209.71	1.3	9.6
21	TUBERS AND MUSHROOMS	0.439	197.25	204.56	207.25	1.3	5.1
22	OTHER ARTICLES OF CLOTHING AND CLOTHING ACCESSORIES	0.059	148.58	151.45	153.41	1.3	3.3
23	DUCK (FRESH)	0.319	206.41	208.85	211.53	1.3	2.5
24	MATERIALS FOR THE MAINTENANCE AND REPAIR OF THE DWELLING	3.663	148.55	150.80	152.60	1.2	2.7
25	CLOTHING MATERIALS	0.334	172.72	177.80	179.89	1.2	4.1
26	PULSES/LEGUMES	0.413	237.01	236.91	239.67	1.2	1.1
27	RESTAURANTS AND HOTELS	5.861	300.87	298.66	301.94	1.1	0.4
28	SPARE PARTS AND ACCESSORIES FOR PERSONAL TRANSPORT EQUIPMENT	0.084	231.97	251.90	254.62	1.1	9.8
29	OTHER CLOTHING (BOTH SEXES)	0.222	129.84	132.84	134.25	1.1	3.4
30	MOTOR OIL	0.062	153.94	164.95	166.50	0.9	8.2
31	FISH (FRESH)	7.435	242.56	250.70	253.02	0.9	4.3
32	FURNITURE AND FURNISHINGS, CARPETS AND OTHER FLOOR COVERINGS	0.626	228.02	230.70	232.73	0.9	2.1
33	MEDICAL PRODUCTS, APPLIANCES AND EQUIPMENT	3.588	135.79	137.24	138.45	0.9	2.0
34	NOODLES	1.008	236.05	233.85	235.90	0.9	-0.1
35	TRANSPORT SERVICES	0.812	167.07	165.70	167.12	0.9	0.0
36	PORK (FRESH)	5.618	228.85	237.80	239.75	0.8	4.8
37	SEAFOOD (FRESH, CHILLED OR FROZEN)	0.229	247.35	250.94	252.84	0.8	2.2
38	GLASSWARE, TABLEWARE AND HOUSEHOLD UTENSILS	0.078	146.91	149.81	150.91	0.7	2.7
39	DAIRY PRODUCTS	1.552	167.51	168.06	169.28	0.7	1.1
40	OTHER GRAINS	0.090	315.04	319.20	321.17	0.6	1.9

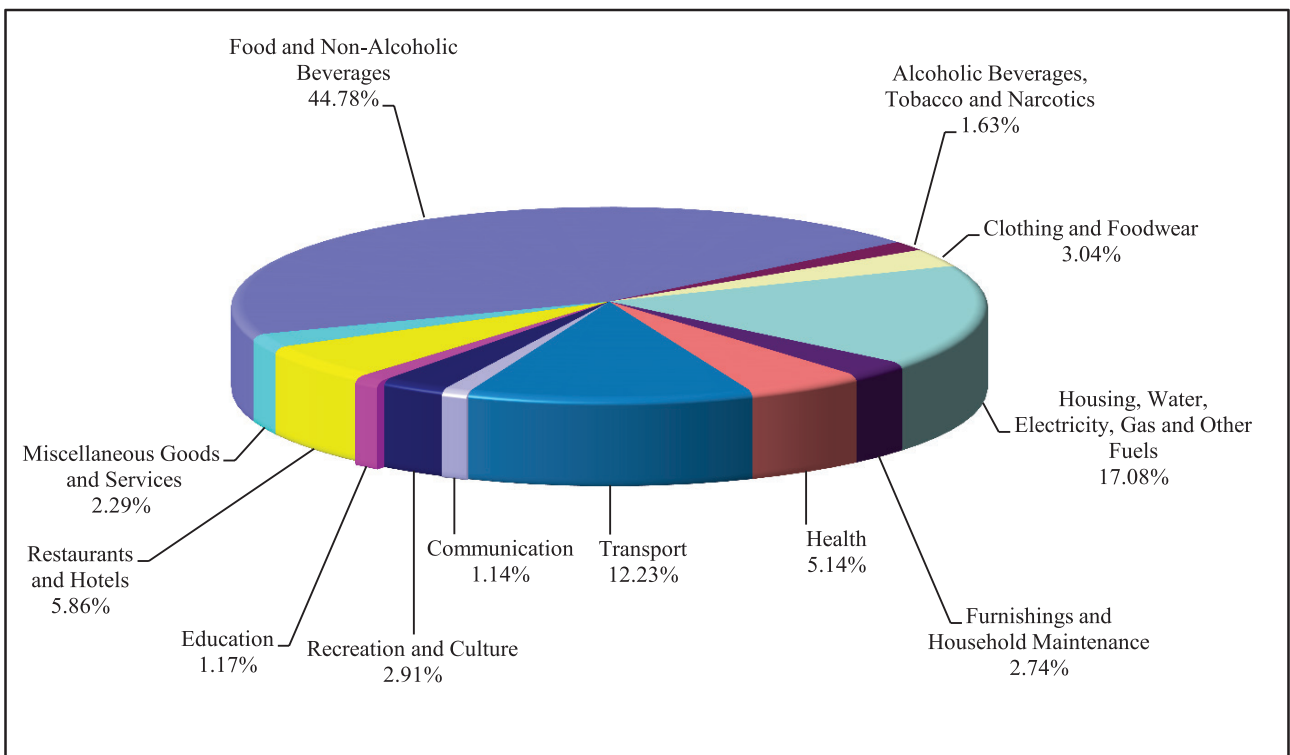
Source: National Institute of Statistics

Chart 1: Consumer Price Index



Source: National Institute of Statistics

Chart 2: Weight of All Group Indices in Consumer Basket



Source: National Institute of Statistics

Table 3: Gross Domestic Product (GDP)

	At Constant 2000 Prices					At Current Prices				
	2016p/	2017p/	2018p/	2019p/	2020p/	2016p/	2017p/	2018p/	2019p/	2020p/
GDP in Billion KHR	45,961	49,177	52,850	56,578	54,807	81,242	89,831	99,544	110,014	103,512
GDP in Million USD	11,405	12,148	13,001	13,901	13,440	20,159	22,191	24,488	27,030	25,383
GDP % Growth Rate	6.9	7.0	7.5	7.1	-3.1	10.6	10.6	10.8	10.5	-5.9
GDP % Growth Rate, by Economic Activity										
Agriculture, Fisheries & Forestry	1.3	1.7	1.1	-0.5	0.8	3.0	4.4	4.4	4.0	3.7
Industry	10.6	9.7	11.6	11.3	-2.8	17.7	15.8	16.0	17.1	-4.7
Services	6.8	7.0	6.8	6.2	-5.4	10.8	10.1	10.2	8.7	-12.3
GDP Per Capita in Million KHR	3.0	3.2	3.4	3.5	3.4	5.4	5.8	6.3	6.9	6.4
GDP Per Capita in USD	752	782	826	871	831	1,330	1,429	1,555	1,694	1,570

Chart 3: GDP by Economic Activity (At Constant 2000 Prices)

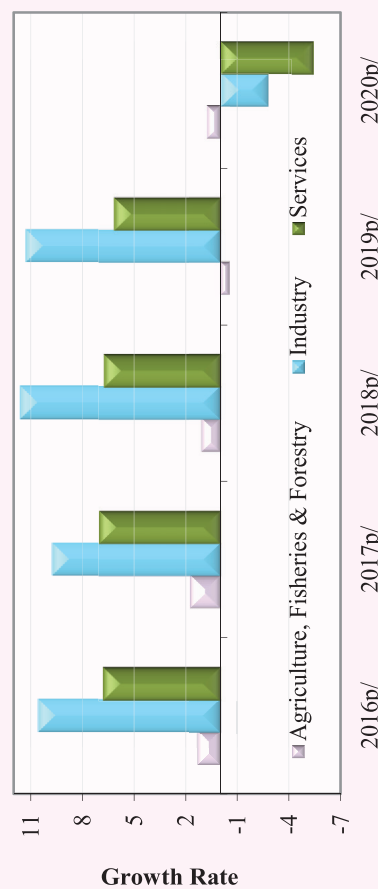
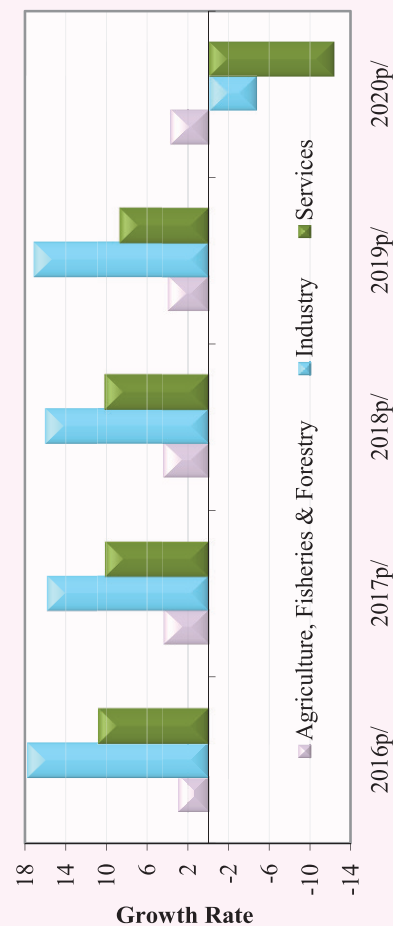


Chart 4: GDP by Economic Activity (At Current Prices)



p/: preliminary estimates

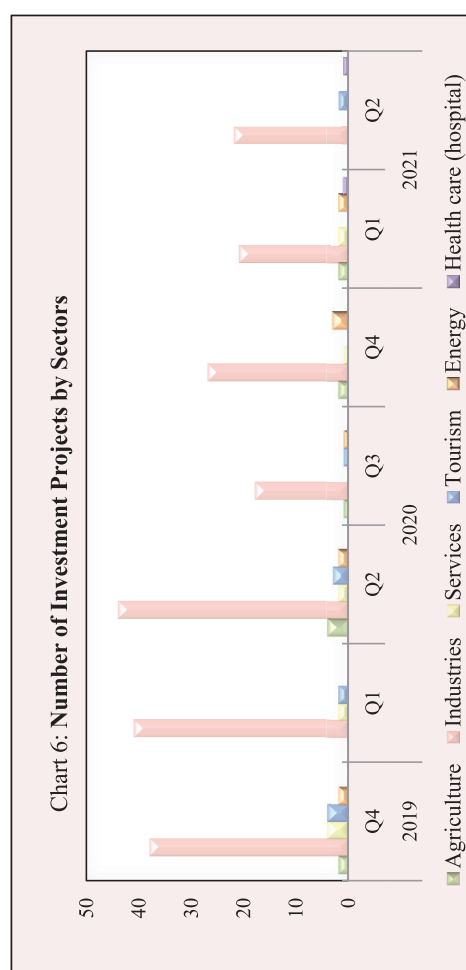
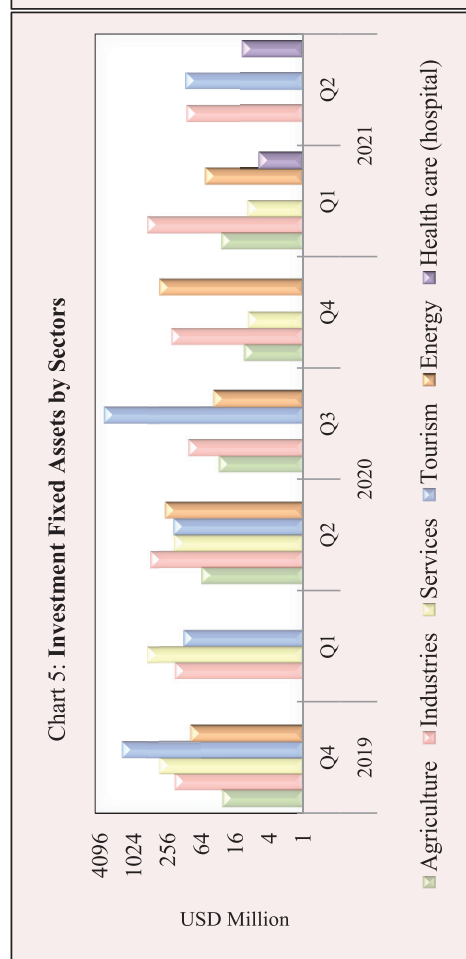
r/: revised

Source: National Institute of Statistics

Table 4: Investment Projects Approved by Sectors

(In Million USD)

Sector	Agriculture		Industries		Services		Tourism		Energy		Health care (hospital)		Total	
	Projects	Fixed Assets	Projects	Fixed Assets	Projects	Fixed Assets	Projects	Fixed Assets	Projects	Fixed Assets	Projects	Fixed Assets	Projects	Fixed Assets
2018														
Total	13	444.2	115	984.0	10	2,869.9	12	1,577.8	-	-	150	5,875.8		
2019														
Q4	2	27.5	38	198.5	4	361.4	4	1,703.7	2	100.4	-	-	50	2,391.6
Total	5	68.7	164	859.4	10	1028.3	17	6,051.6	3	158.6	-	-	199	8,166.6
2020														
Q1	-	-	41	191.0	2	592.1	2	133.0	-	-	-	-	45	916.1
Q2	4	62.5	44	509.0	2	198.1	3	202.4	2	282.1	-	-	55	1,254.1
Q3	1	31.7	18	109.3	-	-	1	3,515.1	1	39.9	-	-	21	3,695.9
Q4	2	11.4	27	221.6	1	9.6	-	-	3	356.8	-	-	33	599.4
Total	7	105.6	130	1030.9	5	799.8	6	3850.5	6	678.7	-	-	154	6,465.5
2021														
Q1	2	29.0	21	579.3	2	9.9	-	-	2	55.0	1	6.3	28	679.6
Q2	-	-	22	121.6	-	-	2	127.8	-	-	1	12.5	25	261.9
Total	2	29.0	43	700.9	2	9.9	2	127.8	2	55.0	2	18.8	53	941.6



Source: Council for the Development of Cambodia (Cambodian Investment Board)

* Revised data

Table 5: Investment Projects Approved by Major Countries*

(In Million USD)

Country	2019		2020				2021	
	Q3	Q4	Q1	Q2	Q3	Q4	Q1	Q2
Cambodia	331.8	788.4	332.3	430.2	1,803.7	1,319.9	470.6	82.6
China	275.4	666.8	471.9	343.2	32.9	245.0	57.8	125.2
Korea	6.0	-	-	231.1	31.7	-	-	-
United States	4.9	-	18.6	14.8	-	-	-	-
Thailand	7.8	-	-	5.0	39.9	-	37.5	-
Vietnam	2.9	-	2.3	5.9	-	-	-	-
Malaysia	-	-	30.0	21.7	-	43.0	16.5	-
Singapore	2.9	-	-	45.2	2.7	-	1.9	-
Taiwan	5.8	-	20.8	27.1	20.7	38.7	9.9	41.6
Australia	-	-	-	-	-	-	-	-
England	292.3	23.4	-	2.0	-	-	-	-
Japan	-	292.4	7.2	-	-	-	-	-
Hong Kong	222.9	613.3	32.2	23.7	39.5	11.1	83.3	12.5
Others	0.0	7.3	0.8	104.0	1,724.9	5.6	2.1	0.0
Total	1,152.5	2,391.6	916.1	1,254.1	3,695.9	1,663.4	679.6	261.9
	(Share of Total)							
Cambodia	28.8	33.0	36.3	34.3	48.8	79.4	69.2	31.5
China	23.9	27.9	51.5	27.4	0.9	14.7	8.5	47.8
Korea	0.5	-	-	18.4	0.9	-	-	-
United States	0.4	-	2.0	1.2	-	-	-	-
Thailand	0.7	-	-	0.4	1.1	-	5.5	-
Vietnam	0.3	-	0.3	0.5	-	-	-	-
Malaysia	-	-	3.3	1.7	-	2.6	2.4	-
Singapore	0.2	-	-	3.6	0.1	-	0.3	-
Taiwan	0.5	-	2.3	2.2	0.6	2.3	1.4	15.9
Australia	-	-	-	-	-	-	-	-
England	25.4	1.0	-	0.2	-	-	-	-
Japan	-	12.2	0.8	-	-	-	-	-
Hong Kong	19.3	25.6	3.5	1.9	1.1	0.7	12.3	4.8
Others	0.0	0.3	0.1	8.3	46.7	0.3	0.3	0.0
Total	100.0	100.0	100.0	100.0	100.0	100.0	100.0	100.0

* Fixed Assets

Source: Council for the Development of Cambodia (Cambodian Investment Board)

Table 6: Daily Exchange Rate in July 2021

(KHR/USD)

Day	Parallel Market Rate			Official Rate	Daily Change*	
	Purchase	Sale	Midpoint		Spread	% Change
1	4,101	4,111	4,106	4,073	-1.0	0.0
2	4,101	4,113	4,107	4,073	0.0	0.0
3	4,103	4,116	4,110	4,073	2.0	0.0
4	4,103	4,116	4,110	4,073	0.0	0.0
5	4,104	4,116	4,110	4,074	1.0	0.0
6	4,105	4,116	4,111	4,074	1.0	0.0
7	4,104	4,116	4,110	4,074	-1.0	0.0
8	4,096	4,107	4,102	4,074	-8.0	-0.2
9	4,096	4,108	4,102	4,071	0.0	0.0
10	4,100	4,111	4,106	4,071	4.0	0.1
11	4,100	4,112	4,106	4,071	0.0	0.0
12	4,100	4,112	4,106	4,071	0.0	0.0
13	4,100	4,112	4,106	4,071	0.0	0.0
14	4,101	4,114	4,108	4,071	1.0	0.0
15	4,105	4,116	4,111	4,072	4.0	0.1
16	4,105	4,116	4,111	4,072	0.0	0.0
17	4,105	4,116	4,111	4,072	0.0	0.0
18	4,105	4,116	4,111	4,072	0.0	0.0
19	4,105	4,116	4,111	4,073	0.0	0.0
20	4,106	4,116	4,111	4,072	1.0	0.0
21	4,106	4,116	4,111	4,072	0.0	0.0
22	4,106	4,117	4,112	4,071	0.0	0.0
23	4,106	4,117	4,112	4,071	0.0	0.0
24	4,106	4,117	4,112	4,071	0.0	0.0
25	4,106	4,117	4,112	4,071	0.0	0.0
26	4,105	4,116	4,111	4,071	-1.0	0.0
27	4,105	4,116	4,111	4,072	0.0	0.0
28	4,106	4,116	4,111	4,071	1.0	0.0
29	4,107	4,117	4,112	4,071	1.0	0.0
30	4,107	4,117	4,112	4,072	0.0	0.0
31	4,107	4,117	4,112	4,072	0.0	0.0
Average Rate	4,104	4,115	4,109	4,072	0.2	0.0

* Spread of Daily Purchasing Market Rate

Table 7: Monthly Exchange Rate

(KHR/USD, End-Period)

Month	Market Rate				Official Rate
	Purchase	Monthly %Change	Sale	Midpoint	
Dec-15	4,048	0.10	4,055	4,052	4,050
Dec-16	4,039	0.17	4,050	4,045	4,037
Dec-17	4,037	0.07	4,046	4,042	4,037
Dec-18	4,027	-0.27	4,039	4,033	4,018
2019					
Oct	4,064	-0.78	4,076	4,070	4,048
Nov	4,074	0.25	4,084	4,079	4,065
Dec	4,079	0.12	4,089	4,084	4,075
2020					
Jan	4,088	0.22	4,100	4,094	4,050
Feb	4,086	-0.05	4,094	4,090	4,070
Mar	4,084	-0.05	4,095	4,090	4,070
Apr	4,108	0.59	4,117	4,113	4,099
May	4,124	0.39	4,135	4,130	4,116
Jun	4,102	-0.53	4,113	4,108	4,093
Jul	4,101	-0.02	4,110	4,106	4,099
Aug	4,107	0.15	4,115	4,111	4,105
Sep	4,109	0.05	4,117	4,113	4,100
Oct	4,084	-0.61	4,094	4,089	4,060
Nov	4,069	-0.37	4,077	4,073	4,048
Dec	4,069	0.00	4,084	4,077	4,045
2021					
Jan	4,077	0.20	4,089	4,083	4,065
Feb	4,083	0.15	4,094	4,089	4,069
Mar	4,062	-0.51	4,069	4,066	4,045
Apr	4,068	0.15	4,083	4,076	4,048
May	4,107	0.96	4,116	4,112	4,072
Jun	4,102	-0.12	4,112	4,107	4,075
Jul	4,107	0.12	4,117	4,112	4,072

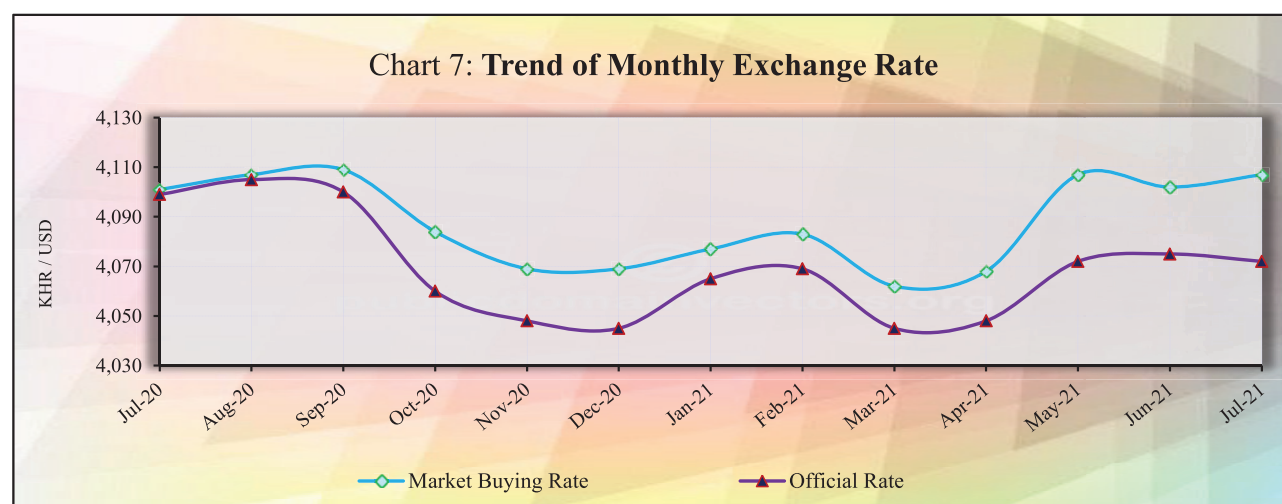


Table 8: The Value of KHR Against Other Currencies

(Official Buying Rate, End-Period)

Unit	SDR	US Dollar	Euro	Japanese Yen	British Pounds	Indonesian Rupiah	Malaysian Ringgit	Philippines Peso	Singapore Dollar	Thai Baht	Vietnamese Dong	China Yuan
	1	1	1	100	1	1000	1	100	1	1	1000	1
Dec-14	5,902	4,075	4,955	3,411	6,342	328	1,166	9,117	3,083	124	191	657
Dec-15	5,617	4,050	4,429	3,362	6,000	294	944	8,630	2,863	112	181	624
Dec-16	5,410	4,037	4,265	3,467	4,960	300	901	8,119	2,792	112	178	580
Dec-17	5,735	4,037	4,821	3,574	5,426	298	994	8,094	3,017	124	178	618
Dec-18	5,588	4,018	4,597	3,641	5,098	277	969	7,653	2,942	124	174	584
Dec-19	5,635	4,075	4,565	3,743	5,344	293	994	8,050	3,023	136	176	583
2020												
Jan	5,572	4,050	4,466	3,718	5,301	297	991	7,945	2,973	130	175	586
Feb	5,575	4,070	4,476	3,711	5,245	290	967	8,010	2,918	129	175	581
Mar	5,578	4,070	4,490	3,768	5,037	249	942	7,996	2,859	125	172	573
Apr	5,591	4,099	4,454	3,843	5,106	269	946	8,120	2,904	126	176	579
May	5,621	4,116	4,558	3,824	5,068	280	947	8,120	2,903	129	177	576
Jun	5,631	4,093	4,602	3,802	5,038	289	956	8,210	2,938	133	177	578
Jul	5,768	4,099	4,867	3,919	5,377	282	967	8,341	2,990	131	177	585
Aug	5,822	4,105	4,889	3,896	5,480	281	986	8,463	3,022	132	177	598
Sep	5,770	4,100	4,815	3,878	5,274	276	988	8,455	2,997	130	177	602
Oct	5,756	4,060	4,780	3,884	5,289	278	975	8,394	2,981	130	175	606
Nov	5,769	4,048	4,844	3,896	5,395	288	995	8,421	3,027	134	175	616
Dec	5,826	4,045	4,962	3,908	5,465	287	1,000	8,423	3,049	135	175	619
2021												
Jan	5,848	4,065	4,926	3,896	5,578	289	1,005	8,450	3,059	136	176	630
Feb	5,887	4,069	4,944	3,831	5,686	289	1,003	8,372	3,063	135	177	630
Mar	5,731	4,045	4,742	3,664	5,558	280	975	8,333	3,003	129	175	616
Apr	5,807	4,048	4,912	3,731	5,649	279	987	8,352	3,056	129	176	625
May	5,878	4,072	4,962	3,705	5,772	285	983	8,520	3,075	130	177	640
Jun	5,814	4,075	4,850	3,686	5,645	281	981	8,402	3,030	127	177	630
Jul	5,813	4,072	4,842	3,722	5,687	281	961	8,095	3,010	124	177	631
Monthly % Change	-0.02	-0.07	-0.16	0.98	0.74	0.00	-2.04	-3.65	-0.66	-2.36	0.00	0.16

Table 9: Deposit Money Bank's Interest Rates on Deposits and Loans in KHR and USD

	Dec-17	Dec-18	Dec-19	Jan-20	Feb-20	Mar-20	Apr-20	May-20	Jun-20	Jul-20	Aug-20	Sep-20	Oct-20	Nov-20	Dec-20	Jan-21	Feb-21	Mar-21	Apr-21	May-21	Jun-21	Jul-21
<i>Weighted Average Rate on New Amount</i>																						
Interest Rate on Deposits and Loans in KHR																						
Deposit (1)	0.90	0.33	0.57	0.64	0.71	0.53	0.62	0.60	0.57	0.74	0.50	0.56	0.58	0.50	0.58	0.56	0.57	0.58	0.73	0.65	0.56	0.52
Demand Deposits	0.04	0.03	0.12	0.03	0.15	0.06	0.06	0.09	0.04	0.04	0.04	0.06	0.04	0.19	0.03	0.05	0.02	0.09	0.04	0.04	0.04	0.04
Saving Deposits	1.19	0.59	0.60	0.67	0.65	0.66	0.66	0.69	0.69	0.67	0.69	0.70	0.59	0.59	0.60	0.61	0.62	0.71	0.50	0.60	0.61	0.58
Term Deposits	4.70	5.09	4.10	4.59	4.71	5.47	4.91	4.42	5.05	4.22	4.17	4.68	4.01	4.16	5.34	5.04	5.13	5.40	5.59	5.16	4.47	4.11
Other Deposits	0.00	0.00	2.47	3.35	0.00	1.62	2.30	2.21	1.61	1.80	2.62	2.28	2.28	3.49	4.63	2.64	3.16	2.19	2.25	2.20	2.20	2.20
Loans (2)	14.51	12.21	8.59	10.64	10.52	10.19	9.74	10.58	9.66	11.36	11.41	10.89	10.55	10.71	9.82	11.34	11.29	10.56	9.89	10.67	10.39	10.74
Overdraft	7.55	8.30	7.72	7.82	7.61	7.94	7.93	7.96	7.98	8.45	8.17	8.39	8.39	7.64	7.14	8.45	7.41	8.76	8.19	7.45	8.29	8.35
Credit Card	17.91	16.98	16.73	16.69	16.38	15.58	17.31	17.40	17.28	16.17	14.70	16.11	15.94	15.51	14.21	13.64	14.14	15.93	17.66	14.07	13.29	14.03
Term Loans	14.91	12.36	9.13	11.11	11.02	10.86	10.39	11.72	10.31	11.53	11.58	11.05	10.67	10.80	10.15	11.49	11.46	10.77	9.95	10.82	10.70	11.04
Other Loans	10.71	7.81	5.59	7.65	7.25	7.39	6.63	7.72	6.96	6.03	6.75	6.22	6.76	7.18	6.47	5.65	6.52	6.85	7.50	6.86	7.26	7.66
Interest Rate on Deposits and Loans in USD																						
Deposit (1)	0.75	0.72	0.58	0.52	0.61	0.48	0.45	0.46	0.46	0.41	0.50	0.42	0.41	0.40	0.36	0.35	0.39	0.38	0.30	0.36	0.35	0.34
Demand Deposits	0.22	0.30	0.20	0.11	0.20	0.12	0.14	0.17	0.20	0.08	0.10	0.13	0.10	0.14	0.10	0.08	0.09	0.07	0.07	0.07	0.17	0.11
Saving Deposits	0.54	0.36	0.24	0.25	0.25	0.25	0.25	0.25	0.24	0.25	0.24	0.24	0.20	0.17	0.17	0.17	0.17	0.20	0.23	0.16	0.17	0.17
Term Deposits	3.30	3.35	3.44	3.70	3.53	3.35	3.28	3.33	3.34	3.35	3.47	3.21	2.95	3.31	3.24	3.06	3.23	3.31	3.27	3.36	3.53	3.44
Other Deposits	1.65	2.64	2.47	2.03	2.16	2.48	2.03	0.88	0.79	0.79	0.79	0.84	0.75	0.75	0.80	0.78	0.70	0.78	0.54	4.08	0.55	0.48
Loans (2)	8.31	8.47	7.97	8.18	8.24	8.04	7.76	8.00	8.04	8.33	8.51	7.96	7.87	8.55	8.45	8.74	8.79	8.22	8.24	8.39	8.32	8.43
Overdraft	7.51	7.57	7.57	7.59	7.57	7.49	7.49	7.39	7.45	5.58	6.30	6.85	6.12	5.49	6.15	6.79	6.77	5.80	6.57	6.81	5.57	5.47
Credit Card	19.26	28.93	11.97	11.18	8.84	14.79	16.59	16.89	16.89	15.23	16.14	15.61	15.71	16.80	17.02	17.56	16.72	16.62	16.44	16.68	16.22	13.20
Term Loans	9.92	9.64	8.72	9.55	9.60	9.41	8.78	9.43	9.22	9.27	9.27	8.37	8.69	9.44	9.11	9.52	9.66	8.90	9.14	9.12	9.08	9.33
Other Loans	6.08	6.29	6.50	6.41	6.44	6.16	5.64	5.50	5.60	5.76	6.26	6.61	5.96	5.89	6.01	6.33	6.16	6.04	6.16	6.34	5.85	5.94
<i>Weighted Average Rate on Outstanding Amount</i>																						
Interest Rate on Deposits and Loans in KHR																						
Deposit (1)	2.70	2.69	2.54	2.69	2.68	2.80	2.85	2.77	2.83	2.83	2.81	2.80	2.80	2.83	2.98	2.86	2.81	2.89	2.96	2.98	2.96	3.00
Demand Deposits	0.17	0.20	0.22	0.16	0.28	0.18	0.19	0.23	0.29	0.29	0.28	0.26	0.30	0.19	0.19	0.17	0.21	0.22	0.26	0.27	0.26	0.34
Saving Deposits	1.31	1.01	0.91	0.92	0.81	0.89	0.90	0.90	0.93	0.98	0.92	0.90	0.72	0.83	0.82	0.80	0.82	0.81	0.81	0.82	0.89	0.88
Term Deposits	5.87	5.87	5.42	5.64	5.67	5.78	5.93	5.79	5.71	5.53	5.59	5.62	5.55	5.63	5.66	5.73	5.69	5.75	5.81	5.87	5.78	5.70
Other Deposits	0.00	7.00	2.81	1.84	2.23	3.53	3.29	3.35	2.93	2.56	2.57	2.60	2.59	2.61	3.20	3.20	2.60	2.96	2.60	2.58	2.58	2.58
Loans (2)	16.13	13.30	10.38	10.54	10.42	10.46	10.36	10.27	10.27	10.27	10.28	10.27	10.26	10.54	10.35	10.46	10.45	10.38	10.37	10.35	10.36	10.32
Overdraft	8.72	8.34	8.08	8.14	8.12	8.08	8.03	8.10	8.12	8.09	8.04	8.00	7.93	7.92	7.93	7.93	7.92	7.91	7.84	7.87	7.90	7.79
Credit Card	20.88	19.51	17.29	17.25	17.06	16.87	16.84	16.74	16.73	16.78	16.62	16.46	16.52	16.41	16.25	16.25	16.08	16.03	16.03	15.93	15.90	15.79
Term Loans	16.55	13.50	10.62	10.70	10.61	10.66	10.54	10.44	10.44	10.44	10.45	10.45	10.43	10.71	10.54	10.63	10.62	10.56	10.53	10.51	10.53	10.49
Other Loans	11.09	7.72	6.28	6.78	6.86	6.88	6.86	6.90	6.89	6.87	6.87	6.83	6.82	6.82	6.73	6.75	6.77	6.70	6.72	6.67	6.71	6.81
Interest Rate on Deposits and Loans in USD																						
Deposit (1)	2.48	2.24	2.25	2.32	2.32	2.37	2.39	2.40	2.40	2.41	2.31	2.32	2.30	2.39	2.37	2.32	2.31	2.59	2.32	2.32	2.33	2.42
Demand Deposits	0.51	0.46	0.35	0.30	0.47	0.36	0.45	0.46	0.44	0.47	0.40	0.42	0.46	0.41	0.41	0.41	0.39	0.39	0.41	0.41	0.40	0.40
Saving Deposits	0.83	0.61	0.43	0.44	0.41	0.46	0.43	0.42	0.43	0.44	0.42	0.42	0.36	0.42	0.41	0.41	0.41	0.40	0.40	0.40	0.41	0.40
Term Deposits	4.41	4.38	4.34	4.41	4.37	4.38	4.32	4.35	4.39	4.34	4.27	4.30	4.26	4.41	4.40	4.27	4.26	4.39	4.26	4.23	4.30	4.42
Other Deposits	3.01	2.57	2.43	2.16	2.03	2.03	1.99	1.63	1.37	1.00	0.96	0.87	0.96	0.98	0.94	1.08	0.91	0.89	0.96	1.18	0.79	0.69
Loans (2)	9.22	9.76	9.27	9.39	9.28	9.24	9.38	9.20	9.22	9.19	9.17	9.11	9.17	9.21	9.14	8.92	9.07	9.02	9.00	8.97	8.93	8.99
Overdraft	8.10	7.94	7.82	7.88	7.85	7.78	7.84	7.86	7.84	7.87	7.80	7.77	7.80	7.79	7.71	7.74	7.68	7.66	7.66	7.65	7.60	7.59
Credit Card	15.64	28.67	15.53	15.70	15.34	18.18	17.95	17.90	17.95	18.02	17.98	17.83	17.56	17.21	17.11	17.13	17.01	16.86	16.90	16.72	16.73	16.66
Term Loans	9.43	9.74	9.51	9.62	9.51	9.46	9.63	9.42	9.44	9.40	9.38	9.31	9.38	9.43	9.36	9.09	9.26	9.21	9.19	9.16	9.13	9.19
Other Loans	6.96	6.88	7.19	7.18	7.16	7.10	6.99	6.94	6.98	6.97	7.02	7.27	7.00	6.95	6.93	6.94	6.96	6.95	6.94	6.84	6.86	6.82

Including Commercial Banks and Specialized Banks

(1). Weighted average interest rate on deposits

(2). Weighted average interest rate on loans excluded bank placements.

*Revised Data

Table 10: Central Bank Survey*

(In Billion KHR)

	Mar-21	Apr-21	May-21	Jun-21	Jul-21
Net Foreign Assets	81,465.1	82,304.1	84,194.5	81,961.2	81,540.3
Claims on Nonresidents	81,949.4	82,794.8	84,691.1	82,452.5	82,031.5
Liabilities to Nonresidents	-484.3	-490.7	-496.7	-491.3	-491.2
Claims on Other Depository Corporations	4,022.4	3,926.2	3,914.1	3,814.8	3,696.4
Net Claims on Central Government	-19,218.7	-18,337.8	-17,749.8	-16,490.5	-15,679.0
Claims on Central Government	0.0	0.0	0.0	0.0	0.0
Liabilities to Central Government	-19,218.7	-18,337.8	-17,749.8	-16,490.5	-15,679.0
Claims on Other Sectors	148.8	155.5	138.5	101.0	120.6
Claims on Other Financial Corporations	108.8	107.1	81.3	72.5	72.5
Claims on State and Local Government	0.0	0.0	0.0	0.0	0.0
Claims on Public Nonfinancial Corporations	0.0	0.0	0.0	0.0	0.0
Claims on Private Sector	40.0	48.4	57.3	28.5	48.1
Monetary Base	43,832.3	46,522.8	45,315.7	45,495.0	45,224.9
Currency in Circulation	16,689.2	17,487.3	16,992.2	16,480.4	16,596.5
Liabilities to Other Depository Corporations	27,120.5	29,012.9	28,262.8	28,950.6	28,568.1
Liabilities to Other Sectors	22.6	22.7	60.8	64.0	60.3
Other Liabilities to Other Depository Corporations	18,358.6	16,287.9	18,430.0	18,270.7	18,145.3
Deposits And Securities Other Than Shares Excl. Form Monetary Base	82.5	82.8	83.5	81.8	81.4
Deposits Included in Broad Money	0.0	0.0	0.0	0.0	0.0
Securities Other Than Shares Incl. in Broad Money	0.0	0.0	0.0	0.0	0.0
Deposits Excl. From Broad Money	40.5	40.7	41.1	42.8	42.4
Securities Other Than Shares Excl. From Broad Money	42.1	42.1	42.3	39.0	39.0
Loans	0.0	0.0	0.0	0.0	0.0
Financial Derivatives	0.0	0.0	0.0	0.0	0.0
Shares and Other Equity	5,831.6	6,828.1	8,432.5	7,304.6	8,043.6
Other Items (Net)	-1,687.5	-1,673.8	-1,764.4	-1,765.8	-1,816.9
<i>IFS Vertical Check</i>	<i>0.0</i>	<i>0.0</i>	<i>0.0</i>	<i>0.0</i>	<i>0.0</i>

* Included only central bank

** Revised Data

Table 11: Other Depository Corporations Survey*

(In Billion KHR)

	Mar-21	Apr-21	May-21	Jun-21	Jul-21
Net Foreign Assets	-16,618.6	-15,035.5	-16,269.9	-18,606.3	-20,517.9
Claims on Nonresidents	18,562.2	19,624.9	18,785.1	18,576.0	17,554.4
Liabilities to Nonresidents	-35,180.8	-34,660.4	-35,055.0	-37,182.3	-38,072.2
Claims On Central Bank	44,948.6	44,510.2	45,991.9	47,015.3	46,595.5
Currency	1,669.9	1,895.0	1,816.2	1,698.6	1,683.9
Reserve Deposits and Securities Other Than Shares	43,235.9	42,577.6	44,136.3	45,280.9	44,892.8
Other Claims on Central Bank	42.9	37.6	39.5	35.8	18.8
Net Claims on Central Government	-5,933.5	-5,578.9	-5,820.8	-6,036.7	-6,124.3
Claims on Central Government	71.4	71.6	71.7	84.9	95.5
Liabilities to Central Government	-6,004.9	-5,650.5	-5,892.5	-6,121.5	-6,219.8
Claims on Other Sectors	161,439.1	158,271.2	161,665.0	167,935.8	170,250.8
Claims on Other Financial Corporations	4,299.7	4,286.6	4,201.7	4,132.1	4,216.3
Claims on State and Local Government	0.0	0.0	0.0	0.0	0.0
Claims on Public Nonfinancial Corporations	0.7	0.7	0.7	0.8	0.8
Claims on Private Sector	157,138.8	153,983.9	157,462.5	163,803.0	166,033.7
Liabilities to Central Bank	3,167.8	956.5	3,181.2	3,111.3	3,081.3
Transferable Deposits Incl. in Broad Money	26,730.0	26,383.3	26,720.0	27,286.4	25,934.4
Other Deposits Incl. in Broad Money	101,614.9	102,453.0	102,650.5	105,842.3	106,356.5
Securities Other Than Shares Incl. in Broad Money	0.0	0.0	0.0	0.0	0.0
Deposits Excl. From Broad Money	193.5	182.6	190.2	199.7	218.8
Securities Other Than Shares Excl. From Broad Money	0.0	0.0	0.0	0.0	0.0
Loans	1,756.7	1,885.9	2,074.6	2,136.6	1,949.9
Financial Derivatives	0.0	0.0	0.0	0.0	0.0
Shares and Other Equity	44,946.6	44,552.5	45,708.3	46,898.7	47,644.6
Other Items (Net)	5,426.0	5,753.1	5,041.3	4,833.1	5,018.7
<i>IFS Vertical Check</i>	<i>0.0</i>	<i>0.0</i>	<i>0.0</i>	<i>0.0</i>	<i>0.0</i>

* Included commercial banks and MDIs

** Revised Data

Table 12: Depository Corporations Survey*

(In Billion KHR)

	Mar-21	Apr-21	May-21	Jun-21	Jul-21
Net Foreign Assets	64,846.4	67,268.6	67,924.6	63,354.9	61,022.4
Claims on Nonresidents	100,511.6	102,419.7	103,476.2	101,028.5	99,585.8
Liabilities to Nonresidents	-35,665.2	-35,151.1	-35,551.7	-37,673.6	-38,563.4
Domestic Claims	136,435.7	134,510.0	138,232.9	145,509.6	148,568.1
Net Claims on Central Government	-25,152.2	-23,916.7	-23,570.6	-22,527.2	-21,803.2
Claims on Central Government	71.4	71.6	71.7	84.9	95.5
Liabilities to Central Government	-25,223.6	-23,988.3	-23,642.3	-22,612.1	-21,898.7
Claims on Other Sectors	161,587.9	158,426.7	161,803.5	168,036.8	170,371.4
Claims on Other Financial Corporations	4,408.5	4,393.7	4,283.0	4,204.6	4,288.8
Claims on State and Local Government	0.0	0.0	0.0	0.0	0.0
Claims on Public Nonfinancial Corporations	0.7	0.7	0.7	0.8	0.8
Claims on Private Sector	157,178.7	154,032.3	157,519.8	163,831.5	166,081.8
Broad Money Liabilities (M2)	143,386.9	144,451.2	144,607.3	147,974.6	147,263.7
Currency Outside Depository Corporations	15,019.3	15,592.3	15,176.0	14,781.9	14,912.6
Transferable Deposits	26,735.6	26,388.9	26,763.1	27,332.1	25,976.3
Other Deposits	101,632.0	102,470.0	102,668.1	105,860.6	106,374.8
Securities Other Than Shares	0.0	0.0	0.0	0.0	0.0
<i>of which Foreign Currency (of M2)</i>	<i>119,480.4</i>	<i>119,310.5</i>	<i>119,464.4</i>	<i>122,447.9</i>	<i>121,391.1</i>
Deposits Excl. From Broad Money	234.0	223.3	231.4	242.5	261.3
Securities Other Than Shares Excl. From Broad Money	42.1	42.1	42.3	39.0	39.0
Loans	1,756.7	1,885.9	2,074.6	2,136.6	1,949.9
Financial Derivative	0.0	0.0	0.0	0.0	0.0
Shares and Other Equity	50,778.1	51,380.7	54,140.8	54,203.4	55,688.2
Other Items (Net)	5,084.3	3,795.3	5,061.0	4,268.5	4,388.4
<i>IFS Vertical Check</i>	<i>0.0</i>	<i>0.0</i>	<i>0.0</i>	<i>0.0</i>	<i>0.0</i>

* Included data of central bank and other depository corporations(ODCs)

** Revised Data

Table 13: Other Financial Corporations Survey*

(In Billion KHR)

	Mar-21	Apr-21	May-21	Jun-21	Jul-21
Net Foreign Assets	-859.6	-864.2	-831.1	-873.2	-806.7
Claims on Nonresidents	95.1	108.1	119.8	111.6	177.7
Liabilities to Nonresidents	-954.7	-972.3	-950.9	-984.8	-984.4
Claims on Depository Corporations	501.5	541.1	506.7	511.8	527.5
Net Claims on Central Government	-18.2	-17.9	-18.2	-18.7	-18.5
Claims on Central Government	1.2	1.5	1.8	2.0	2.3
Liabilities to Central Government	-19.4	-19.4	-19.9	-20.8	-20.9
Claims on Other Sectors	1,698.3	1,693.7	1,716.4	1,750.6	1,797.8
Claims on State and Local Government	0.0	0.0	0.0	0.0	0.0
Claims on Public Nonfinancial Corporations	0.0	0.0	0.0	0.0	0.0
Claims on Private Sector	1,698.3	1,693.7	1,716.4	1,750.6	1,797.8
Deposit	30.4	30.0	29.9	26.7	130.8
Securities Other Than Shares	0.0	0.0	0.0	0.0	0.0
Loans	145.3	145.4	146.0	152.1	152.1
Financial Derivatives	0.0	0.0	0.0	0.0	0.0
Shares and Other Equity	1,216.5	1,220.3	1,231.6	1,205.5	1,209.0
Other Items (Net)	-70.3	-43.0	-33.6	-14.0	8.2
<i>IFS Vertical Check</i>	<i>0.0</i>	<i>0.0</i>	<i>0.0</i>	<i>0.0</i>	<i>0.0</i>

* Included only specialized banks

** Revised Data

Table 14: Financial Corporations Survey*

(In Billion KHR)

	Mar-21	Apr-21	May-21	Jun-21	Jul-21
Net Foreign Assets	63,986.8	66,404.4	67,093.5	62,481.7	60,215.7
Claims on Nonresidents	100,606.7	102,527.8	103,596.1	101,140.1	99,763.5
Liabilities to Nonresidents	-36,619.9	-36,123.4	-36,502.6	-38,658.4	-39,547.8
Domestic Claims	133,707.3	131,792.0	135,648.1	143,037.0	146,058.6
Net Claims on Central Government	-25,170.4	-23,934.7	-23,588.8	-22,545.9	-21,821.8
Claims on Central Government	72.6	73.1	73.5	86.9	97.8
Liabilities to Central Government	-25,243.0	-24,007.7	-23,662.3	-22,632.8	-21,919.6
Claims on Other Sectors	158,877.7	155,726.7	159,236.9	165,582.9	167,880.4
Claims on State and Local Government	0.0	0.0	0.0	0.0	0.0
Claims on Public Nonfinancial Corporations	0.7	0.7	0.7	0.8	0.8
Claims on Private Sector	158,877.0	155,726.0	159,236.2	165,582.1	167,879.6
Currency Outside Financial Corporations	15,000.8	15,572.3	15,154.0	14,756.3	14,885.6
Deposits	126,490.7	126,751.0	127,040.7	130,692.4	130,082.7
Securities Other Than Shares	0.0	0.0	0.0	0.0	0.0
Loans	1,679.8	1,746.9	1,932.2	1,985.7	1,797.6
Financial Derivatives	0.0	0.0	0.0	0.0	0.0
Shares and Other Equity	51,994.6	52,600.9	55,372.4	55,408.9	56,897.1
Other Items (Net)	2,528.1	1,525.2	3,242.4	2,675.3	2,611.3
<i>IFS Vertical Check</i>	<i>0.0</i>	<i>0.0</i>	<i>0.0</i>	<i>0.0</i>	<i>0.0</i>

* Included data of depository corporations and other financial corporations

** Revised Data

Chart 8: Financial Corporations Survey

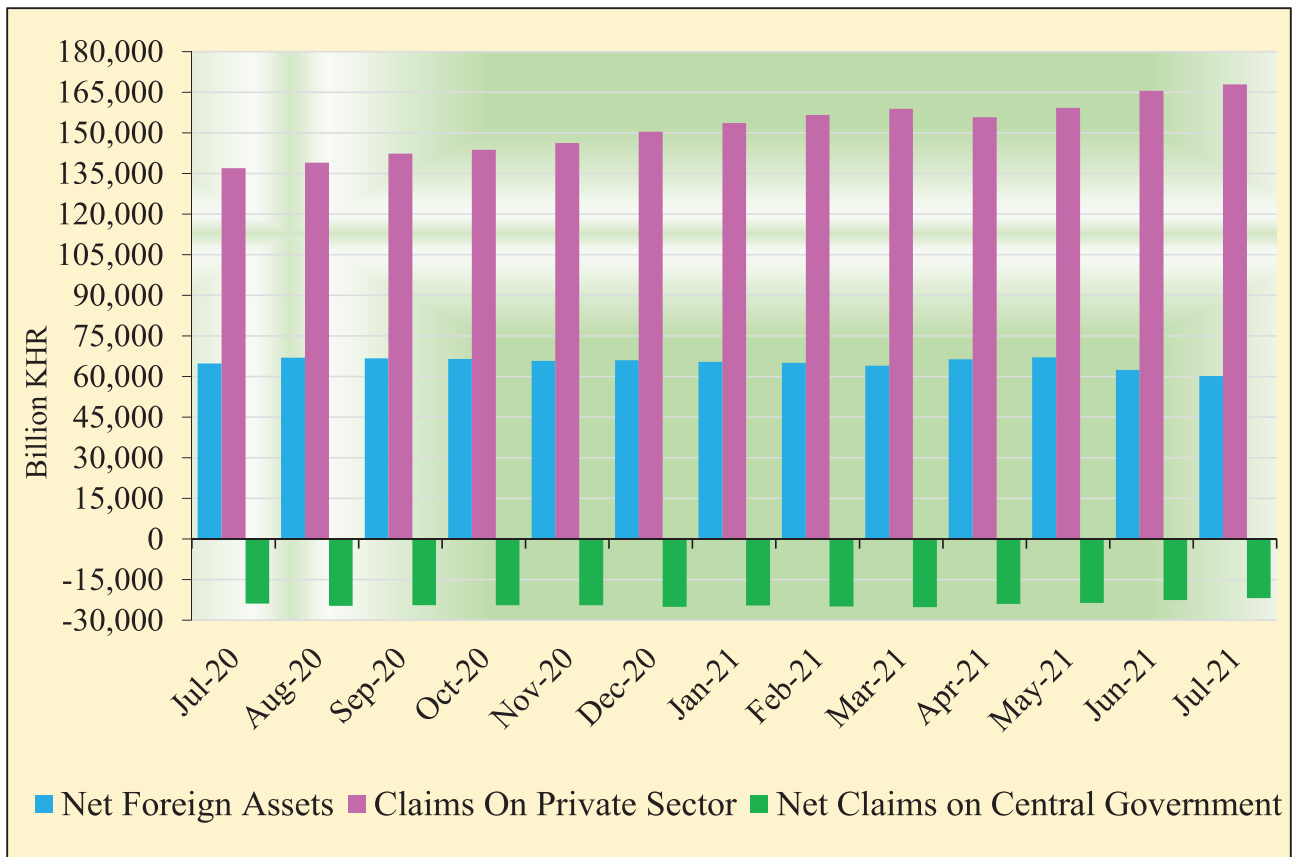


Chart 9: Monetary Aggregates Components

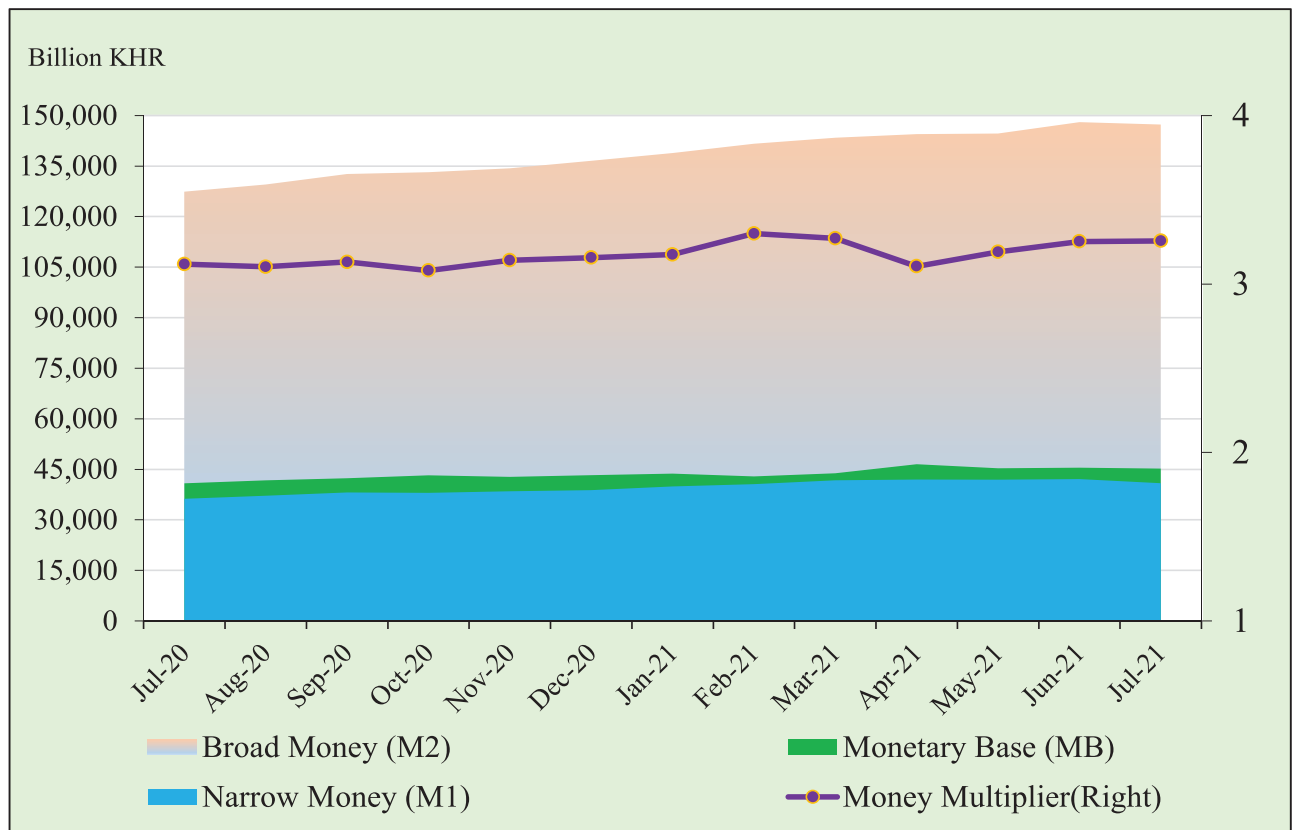


Table 15: Credit Granted by Banking Institutions Classified by Industry

(In Billion KHR)

	Mar-21	Apr-21	May-21	Jun-21	Jul-21
1. Financial Institutions	6,111.6	6,229.3	6,162.4	6,346.9	6,482.2
1.1. National Bank of Cambodia	0.0	0.0	0.0	0.0	0.0
1.2. Depository Institutions	4,279.5	4,437.1	4,359.7	4,649.7	4,758.5
1.3. Other Financial Institutions	1,832.1	1,792.3	1,802.7	1,697.2	1,723.7
2. Non-Financial Institutions	98,719.6	98,881.5	100,504.5	102,588.1	103,778.3
2.1. Agriculture, Forestry and Fishing	10,302.3	10,212.3	10,265.0	10,525.5	10,682.0
2.2. Mining and Quarrying	628.1	621.8	616.6	629.8	641.7
2.3. Manufacturing	5,448.4	5,519.3	5,661.8	5,792.1	5,942.6
2.4. Utilities	1,727.1	1,739.2	1,771.0	1,856.8	1,863.5
2.5. Construction	13,139.6	13,110.4	13,522.5	13,973.2	13,806.1
2.6. Wholesale Trade	13,276.8	13,316.1	13,703.4	13,888.0	14,069.8
2.7. Retail Trade	21,356.5	21,445.5	21,792.5	22,205.8	22,565.2
2.8. Hotels and Restaurants	6,464.9	6,495.9	6,540.8	6,623.5	6,862.9
2.9. Transport and Storage	3,635.6	3,634.4	3,681.2	3,728.8	3,778.5
2.10. Information Media and Telecommunications	1,271.5	1,276.0	1,250.7	1,285.0	1,253.1
2.11. Rental and Operational Leasing Activities, Excluding Real Estate Leasing and Rentals	2,687.9	2,630.4	2,614.4	2,639.6	2,596.6
2.12. Real Estate Activities	11,565.8	11,700.9	11,824.7	11,945.4	12,196.0
2.13. Other Non-Financial Services	7,215.1	7,179.2	7,259.8	7,494.7	7,520.2
3. Personal Essentials	32,289.1	32,456.6	33,031.1	33,671.4	34,091.6
3.1. Personal Lending	13,885.9	13,909.7	14,146.2	14,370.2	14,711.8
3.2. Credit Cards	257.6	252.0	261.3	272.0	281.2
3.3. Mortgages, Owner-Occupied Housing only	18,145.6	18,295.0	18,623.6	19,029.1	19,098.6
4. Other Lending	1,257.1	1,321.7	1,325.3	1,370.9	1,373.6
Total Gross Loan	138,377.5	138,889.1	141,023.4	143,977.2	145,725.7

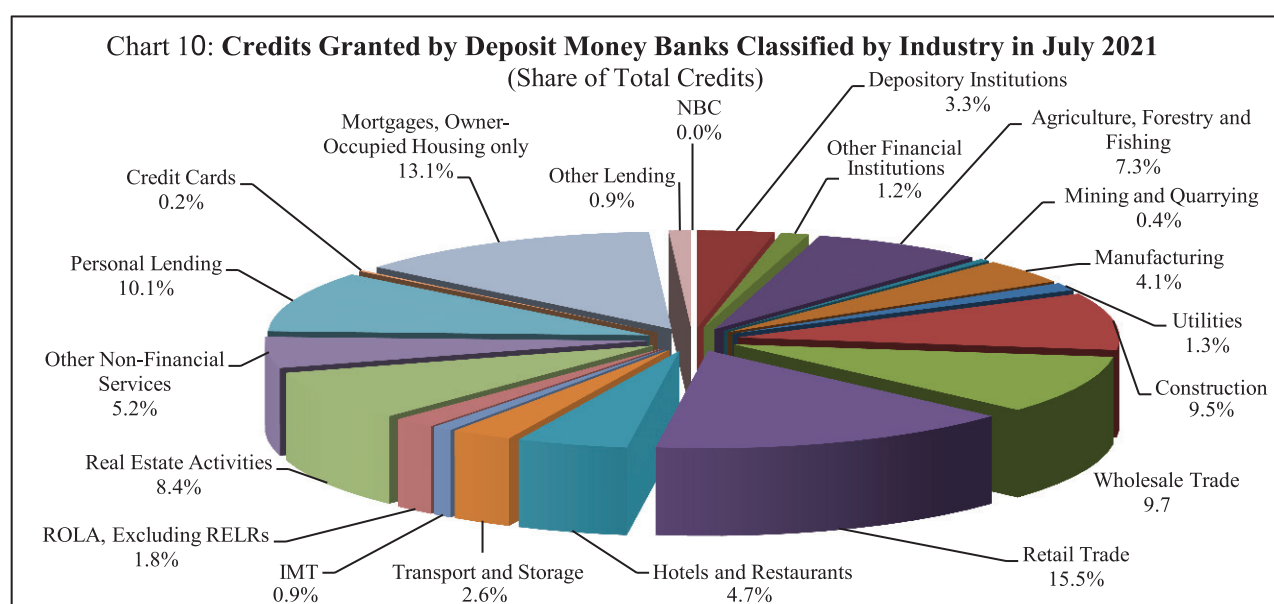


Table 16: Monthly Change of Credit Granted by Banking Institutions Classified by Industry

	Mar-21	Apr-21	May-21	Jun-21	Jul-21
(Monthly Change in Billion KHR)					
1. Financial Institutions	112.1	117.7	-67.0	184.5	135.3
1.1. National Bank of Cambodia	0.0	0.0	0.0	0.0	0.0
1.2. Depository Institutions	90.8	157.5	-77.4	290.0	108.8
1.3. Other Financial Institutions	21.2	-39.8	10.5	-105.5	26.5
2. Non-Financial Institutions	1,529.4	161.9	1,623.0	2,083.6	1,190.2
2.1. Agriculture, Forestry and Fishing	108.3	-90.0	52.7	260.5	156.5
2.2. Mining and Quarrying	-10.7	-6.4	-5.1	13.2	11.9
2.3. Manufacturing	50.2	70.9	142.5	130.3	150.6
2.4. Utilities	20.1	12.1	31.8	85.8	6.7
2.5. Construction	135.3	-29.2	412.1	450.6	-167.0
2.6. Wholesale Trade	251.5	39.3	387.3	184.6	181.7
2.7. Retail Trade	372.3	89.1	347.0	413.3	359.5
2.8. Hotels and Restaurants	147.7	31.1	44.8	82.7	239.4
2.9. Transport and Storage	35.6	-1.2	46.9	47.6	49.6
2.10. Information Media and Telecommunications	-2.5	4.5	-25.4	34.3	-31.8
2.11. Rental and Operational Leasing Activities, Excluding Real Estate Leasing and Rentals	27.6	-57.5	-16.0	25.2	-43.1
2.12. Real Estate Activities	201.2	135.1	123.8	120.7	250.6
2.13. Other Non-Financial Services	192.9	-35.9	80.6	234.9	25.5
3. Personal Essentials	567.0	167.5	574.5	640.3	420.2
3.1. Personal Lending	330.5	23.8	236.5	224.0	341.6
3.2. Credit Cards	-1.3	-5.7	9.4	10.7	9.1
3.3. Mortgages, Owner-Occupied Housing only	237.8	149.3	328.6	405.6	69.5
4. Other Lending	49.0	64.6	3.7	45.5	2.7
Total Gross Loan	2,257.4	511.7	2,134.2	2,953.9	1,748.4
(Monthly Change in Percent)					
1. Financial Institutions	1.9	1.9	-1.1	3.0	2.1
1.1. National Bank of Cambodia	0.0	0.0	0.0	0.0	0.0
1.2. Depository Institutions	2.2	3.7	-1.7	6.7	2.3
1.3. Other Financial Institutions	1.2	-2.2	0.6	-5.9	1.6
2. Non-Financial Institutions	1.6	0.2	1.6	2.1	1.2
2.1. Agriculture, Forestry and Fishing	1.1	-0.9	0.5	2.5	1.5
2.2. Mining and Quarrying	-1.7	-1.0	-0.8	2.1	1.9
2.3. Manufacturing	0.9	1.3	2.6	2.3	2.6
2.4. Utilities	1.2	0.7	1.8	4.8	0.4
2.5. Construction	1.0	-0.2	3.1	3.3	-1.2
2.6. Wholesale Trade	1.9	0.3	2.9	1.3	1.3
2.7. Retail Trade	1.8	0.4	1.6	1.9	1.6
2.8. Hotels and Restaurants	2.3	0.5	0.7	1.3	3.6
2.9. Transport and Storage	1.0	0.0	1.3	1.3	1.3
2.10. Information Media and Telecommunications	-0.2	0.4	-2.0	2.7	-2.5
2.11. Rental and Operational Leasing Activities, Excluded Real Estate Leasing and Rentals	1.0	-2.1	-0.6	1.0	-1.6
2.12. Real Estate Activities	1.8	1.2	1.1	1.0	2.1
2.13. Other Non-Financial Services	2.7	-0.5	1.1	3.2	0.3
3. Personal Essentials	1.8	0.5	1.8	1.9	1.2
3.1. Personal Lending	2.4	0.2	1.7	1.6	2.4
3.2. Credit Cards	-0.5	-2.2	3.7	4.1	3.4
3.3. Mortgages, Owner-Occupied Housing only	1.3	0.8	1.8	2.2	0.4
4. Other Lending	4.1	5.1	0.3	3.4	0.2
Total Gross Loan	1.7	0.4	1.5	2.1	1.2

Table 17: Deposits with Deposit Money Banks

(In Billion KHR)

	Mar-21	Apr-21	May-21	Jun-21	Jul-21
Deposits in KHR					
Demand deposits	3,702.8	3,573.9	3,683.9	3,783.4	3,829.7
Savings deposits	2,233.9	2,379.8	2,539.1	2,762.6	2,749.8
Fixed deposits	4,690.9	4,879.3	5,283.3	5,462.9	5,572.5
Others	121.3	130.1	124.4	168.8	173.6
Total	10,748.9	10,963.2	11,630.8	12,177.7	12,325.6
Deposits in Foreign Currency*					
Demand deposits	26,436.4	25,918.4	26,103.9	26,619.5	25,536.2
Savings deposits	36,108.8	36,317.1	36,819.9	37,294.9	37,028.5
Fixed deposits	52,443.7	52,454.9	53,331.6	53,191.7	53,742.4
Others	1,527.1	1,465.5	1,624.5	1,555.8	1,599.9
Total	116,516.1	116,155.9	117,879.9	118,662.0	117,907.0
Grand Total	127,265.0	127,119.0	129,510.7	130,839.7	130,232.6

* Deposits in foreign currency include deposits of Cambodian residents and non-residents

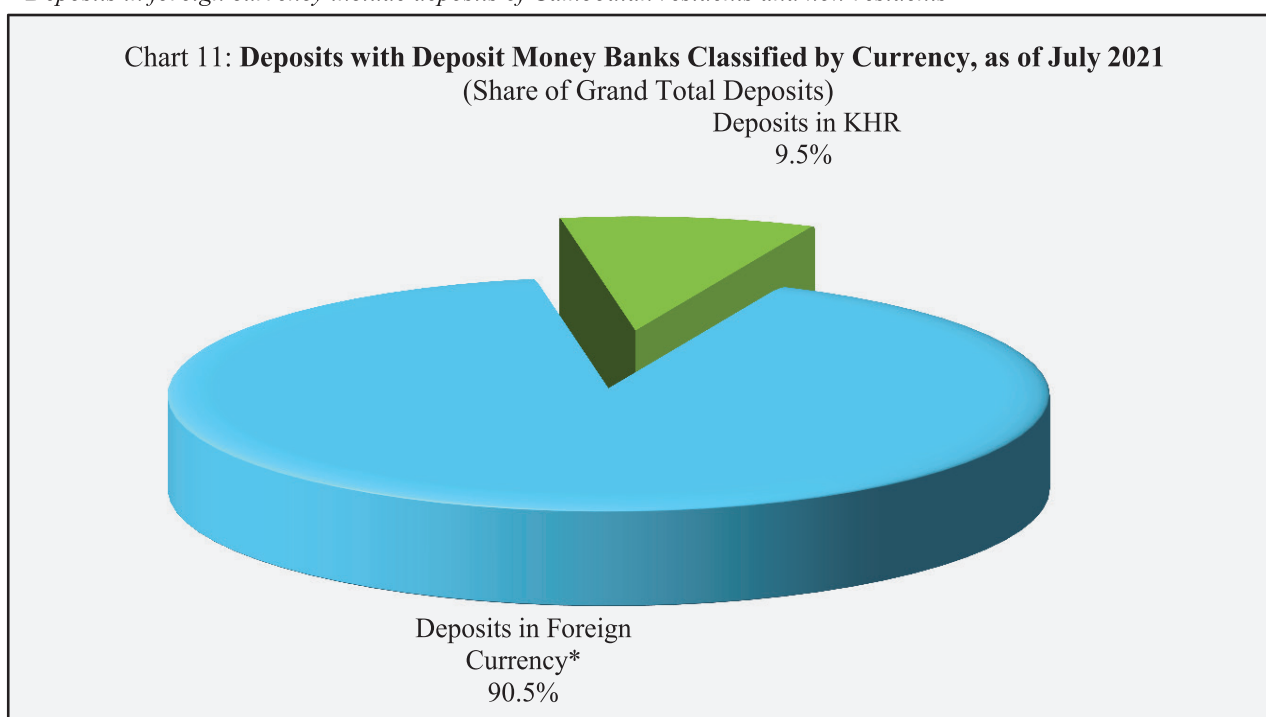


Table 18: Monthly Change of Deposits with Deposit Money Banks

	Mar-21	Apr-21	May-21	Jun-21	Jul-21
	(Change in Billion KHR)				
Deposits in KHR					
Demand deposits	474.6	-128.9	109.9	99.5	46.3
Savings deposits	-292.0	145.9	159.3	223.4	-12.7
Fixed deposits	246.8	188.4	404.0	179.6	109.6
Others	-44.3	8.8	-5.7	44.4	4.8
Total	385.0	214.3	667.6	546.9	147.9
Deposits in Foreign Currency					
Demand deposits	1,126.5	-518.0	185.4	515.6	-1,083.3
Savings deposits	-425.2	208.2	502.9	475.0	-266.4
Fixed deposits	691.7	11.2	876.7	-139.9	550.7
Others	34.8	-61.7	159.0	-68.6	44.0
Total	1,427.7	-360.2	1,724.0	782.1	-755.0
Grand Total	1,812.7	-145.9	2,391.6	1,329.0	-607.1
	(Percentage Change)				
Deposits in KHR					
Demand deposits	14.7	-3.5	3.1	2.7	1.2
Savings deposits	-11.6	6.5	6.7	8.8	-0.5
Fixed deposits	5.6	4.0	8.3	3.4	2.0
Others	-26.8	7.3	-4.3	35.6	2.8
Total	3.7	2.0	6.1	4.7	1.2
Deposits in Foreign Currency					
Demand deposits	4.5	-2.0	0.7	2.0	-4.1
Savings deposits	-1.2	0.6	1.4	1.3	-0.7
Fixed deposits	1.3	0.0	1.7	-0.3	1.0
Others	2.3	-4.0	10.9	-4.2	2.8
Total	1.2	-0.3	1.5	0.7	-0.6
Grand Total	1.4	-0.1	1.9	1.0	-0.5

Chart 12: Deposits in KHR Classified by Type, as of July 2021

(Share of Total KHR Deposits)

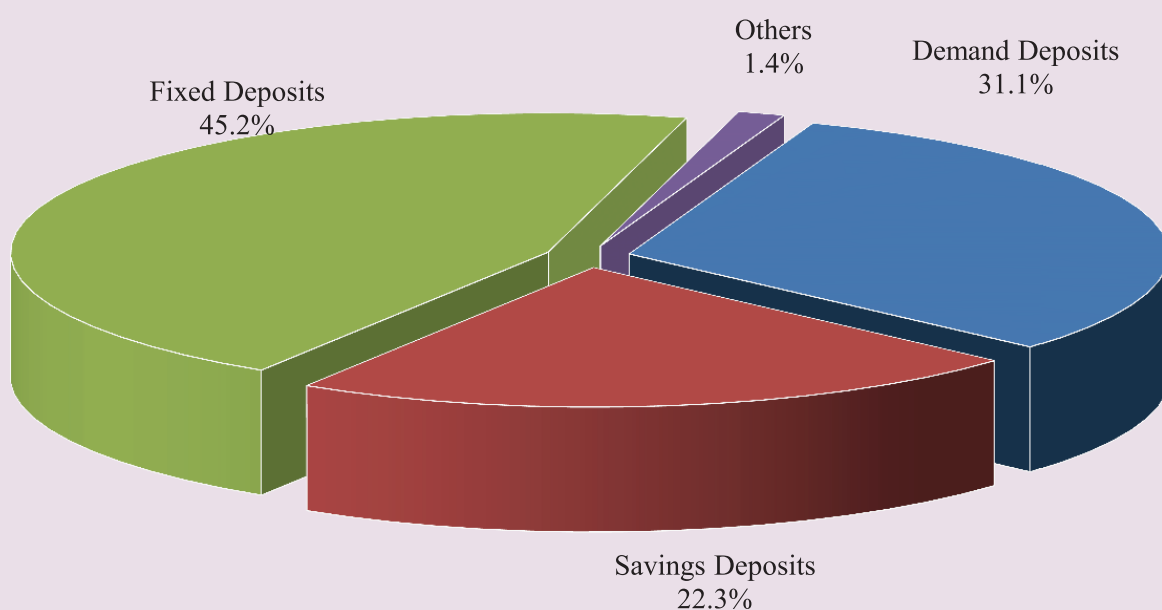


Chart 13: Deposits in Foreign Currency Classified by Type, as of July 2021

(Share of Total Foreign Currency Deposits)

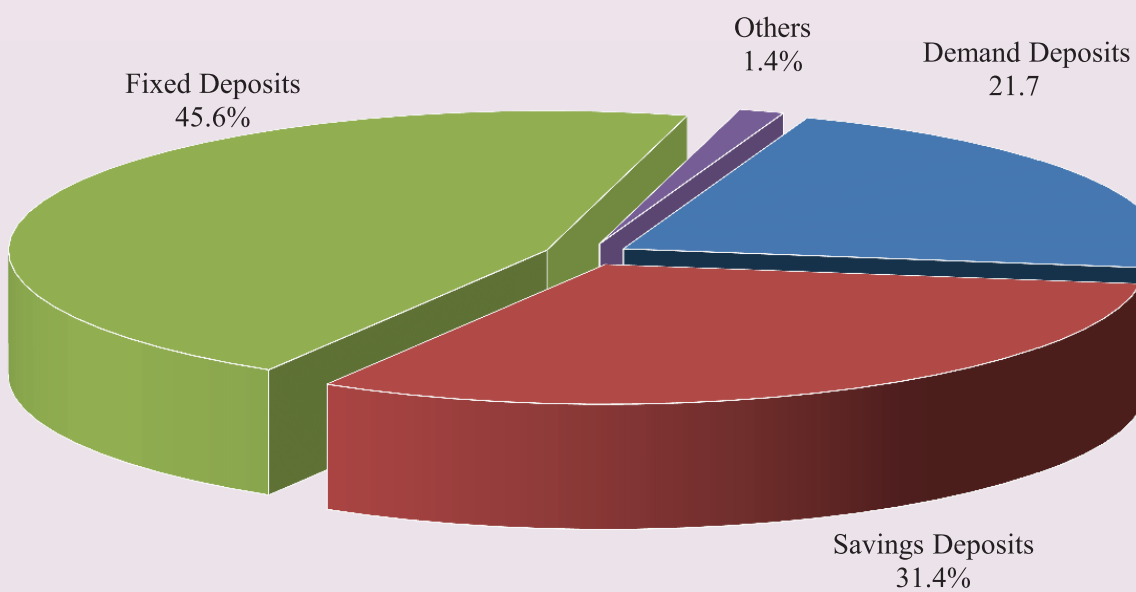


Table 19: Credit Granted by Micro-Finance Institutions*

Period	Numbers of				Loan Outstanding (In Billion KHR)	Interest Rate	
	District	Commune	Village	Household		Monthly	Annually
Dec-13	2,282	16,384	89,829	1,610,844	5,364	2% - 3%	27%-39%
Dec-14	2,754	18,254	107,964	1,844,893	8,340	2% - 3%	27%-39%
Dec-15	4,576	27,510	141,514	2,149,180	12,365	2% - 4%	25%-41%
Dec-16	5,971	32,599	155,499	2,129,907	12,954	2% - 4%	25%-41%
2017*							
	Numbers of Branches			Number of Borrowers**	Loan Outstanding (In Billion KHR)	Interest Rate	
	Head Office	Province/ Krong	District/Khan			Monthly	Annually
Dec-17	76	366	975	1,776,467	17,236	1.4%-2.5%	16.9%-28.8%
Dec-18	80	399	944	1,872,916	21,813	1.2%-2.0%	15.1%-24.0%
2019							
Sep	82	397	960	2,050,622	27,987	1.2%-1.7%	14.3%-20.0%
Oct	82	402	962	2,073,408	28,291	1.1%-1.7%	14.2%-20.0%
Nov	82	403	965	2,091,365	28,886	1.1%-1.7%	14.2%-19.8%
Dec	82	406	965	2,109,170	29,357	1.1%-1.6%	13.4%-18.7%
2020							
Jan	81	381	909	2,053,957	29,314	1.1%-1.6%	13.6%-18.5%
Feb	81	377	910	2,070,481	29,930	1.1%-1.6%	13.9%-19.2%
Mar	81	376	910	2,081,328	30,267	1.1%-1.7%	13.8%-19.4%
Apr	81	379	913	2,055,408	29,843	1.1%-1.7%	13.6%-19.4%
May	80	370	887	2,031,904	29,259	1.1%-1.6%	13.7%-19.1%
Jun	80	367	889	2,040,143	29,226	1.1%-1.6%	13.4%-18.8%
Jul	80	367	885	2,059,759	29,760	1.1%-1.6%	13.4%-18.7%
Aug	80	372	892	2,065,589	30,220	1.1%-1.6%	13.4%-18.7%
Sep	80	372	893	2,080,532	30,916	1.0%-1.5%	12.8%-17.6%
Oct	79	342	749	1,915,484	26,673	1.1%-1.6%	13.8%-18.8%
Nov	79	343	749	1,920,962	27,189	1.1%-1.6%	13.4%-18.4%
Dec	79	343	749	1,919,926	27,527	1.1%-1.6%	13.4%-18.3%
2021							
Jan	79	346	751	1,930,946	28,577	1.1%-1.5%	13.2%-17.5%
Feb	79	343	752	1,939,158	29,332	1.1%-1.5%	13.3%-17.6%
Mar	79	344	752	1,940,901	29,457	1.1%-1.5%	13.3%-17.6%
Apr	79	344	756	1,940,753	29,552	1.1%-1.5%	13.5%-17.9%
May	78	344	756	1,946,445	30,046	1.1%-1.5%	13.4%-17.9%
Jun	78	345	757	1,959,636	30,790	1.1%-1.5%	13.2%-17.6%
Jul	78	358	762	1,977,478	31,515	1.1%-1.5%	13.4%-17.9%

* Including MFI and MDI

** Including Individuals and Legal Entities

*** Revised Data

Table 20: KHR-Denominated Checks Clearing through Clearing House

Date	Number of Cleared Check	Number of Working Day	Number of Cleared Check Per Day	Total Amount (In Billion KHR)	Daily Average Amount (In Billion KHR)	Returned Check	
						Number	Amount (In Billion KHR)
	1	2	3 = 1/2	4	5 = 4/2	6	7
Dec-16	3,938	22	179	490.0	22.3	13	3.15
Total	82,291	242	340	5,421.8	22.4	186	117.50
Dec-17	3,074	20	154	599.0	30.0	22	12.48
Total	37,485	239	1,885	6,607.8	333.1	138	28.51
Dec-18	2,994	19	158	935.1	49.2	16	6.58
Total	38,249	232	165	9,424.1	40.6	197	152.90
2019							
Jun	3,201	19	168	892.3	47.0	16	10.04
Jul	3,845	23	167	1,025.2	44.6	12	34.63
Aug	3,669	22	167	1,065.8	48.4	29	477.70
Sep	3,397	18	189	1,269.3	70.5	20	75.00
Oct	3,641	20	182	1,145.6	57.3	19	2.07
Nov	3,584	18	199	997.0	55.4	15	1.15
Dec	3,734	21	178	1,584.1	75.4	18	11.33
Total	41,696	236	177	13,602.7	57.6	206	630.84
2020							
Jan	3,221	21	153	1,425.0	67.9	21	2.00
Feb	3,113	20	156	1,283.0	64.2	3	0.10
Mar	3,341	21	159	1,985.6	94.6	11	0.65
Apr	2,965	22	135	5,781.6	262.8	10	4,005.27
May	2,465	17	145	1,517.5	89.3	6	0.24
Jun	2,861	21	136	2,035.1	96.9	8	545.03
Jul	3,042	23	132	1,290.6	56.1	8	13.15
Aug	2,563	16	160	1,574.4	98.4	5	500.25
Sep	2,966	18	165	1,272.2	70.7	8	0.43
Oct	2,956	19	156	1,477.2	77.7	10	0.39
Nov	2,813	19	148	1,473.6	77.6	6	6.84
Dec	3,264	23	142	1,839.6	80.0	5	0.57
Total	35,570	240	148	22,955.3	95.6	101	5,074.92
2021							
Jan	2,703	19	142	1,464.0	77.1	4	1.13
Feb	2,747	20	137	1,223.1	61.2	7	5.32
Mar	3,209	22	146	2,137.0	97.1	8	1.25
Apr	1,722	17	101	1,446.2	85.1	12	343.49
May	2,616	20	131	1,677.9	83.9	6	2.51
Jun	2,676	21	127	1,673.9	79.7	7	63.13
Jul	2,501	22	114	1,548.8	70.4	4	0.98
Total	18,174	141	129	11,170.7	79.2	48	417.81

Table 21: USD-Denominated Checks Clearing through Clearing House

Date	Number of Checks Cleared	Number of days Cleared	Number of Cleared Check per Day	Total Amount (In Million USD)	Daily Average Amount (In Million USD)	Returned Checks	
						Number	Amount (In Million USD)
	1	2	3 = 1/2	4	5 = 4/2	6	7
Dec-16	92,820	22	4,219	2,220.4	100.9	778	44.8
Total	1,025,209	242	4,236	21,790.4	90.0	8,738	439.6
Dec-17	101,093	20	5,055	2,824.6	141.2	789	37.6
Total	1,107,752	239	4,635	26,812.7	112.2	8,863	440.4
Dec-18	111,978	19	5,894	3,917.1	206.2	904	63.6
Total	1,238,232	232	5,337	41,462.7	178.7	10,474	2686.1
2019							
Jun	106,018	19	5,580	3,840.7	202.1	788	69.8
Jul	126,695	23	5,508	4,546.5	197.7	1,066	77.2
Aug	117,840	22	5,356	4,367.2	198.5	969	85.8
Sep	103,820	18	5,768	3,539.7	196.6	789	42.2
Oct	117,828	20	5,891	4,215.1	210.8	906	39.8
Nov	105,249	18	5,847	6,651.0	369.5	800	3077.8
Dec	121,353	21	5,779	4,448.5	211.8	964	87.1
Total	1,337,800	236	5,669	51,609.1	218.7	10,654	3779.9
2020							
Jan	112,945	21	5,378	4,155.6	197.9	854	142.0
Feb	104,899	20	5,245	3,513.1	175.7	793	57.7
Mar	115,984	21	5,523	11,338.6	539.9	845	7539.5
Apr	92,572	22	4,208	3,580.9	162.8	720	447.8
May	86,011	17	5,059	2,951.1	173.6	706	64.7
Jun	95,099	21	4,529	3,602.3	171.5	656	88.9
Jul	103,633	23	4,506	3,565.0	155.0	654	27.6
Aug	85,220	16	5,326	2,819.2	176.2	575	28.0
Sep	94,576	18	5,254	3,585.4	199.2	662	209.0
Oct	95,528	19	5,028	3,337.8	175.7	616	38.0
Nov	101,894	19	5,363	3,401.5	179.0	825	49.8
Dec	111,749	23	4,859	4,369.7	190.0	714	45.0
Total	1,200,110	240	5,000	50,220.0	209.3	8,620	8737.8
2021							
Jan	94,741	19	4,986	3,472.2	182.7	651	34.0
Feb	91,093	20	4,555	3,581.1	179.1	559	64.9
Mar	108,132	22	4,915	4,580.6	208.2	713	29.8
Apr	51,038	17	3,002	2,481.7	146.0	653	25.0
May	83,885	20	4,194	3,665.8	183.3	727	35.9
Jun	92,036	21	4,383	4,019.5	191.4	651	33.8
Jul	90,348	22	4,107	4,022.5	182.8	610	74.4
Total	611,273	141	4,335	25,823.4	183.1	4,564	297.7

Table 22: Visitor Arrivals in Cambodia

	2021			% of Total		% Change	
	May	Jun	Jul	Jun	Jul	Jun/May	Jul/Jun
(Mode of Arrival)							
Phnom Penh International Airport	3,099	3,961	5,480	36.1	54.9	27.8	38.3
Kong Keng International Airport	464	377	0	3.4	0.0	-18.8	-100.0
Siem Reap International Airport	2	0	0	0.0	0.0	-100.0	0.0
Land	5,192	6,626	4,504	60.4	45.1	27.6	-32.0
Boat	0	0	0	0.0	0.0	0.0	0.0
Preah Vihea	0	0	0	0.0	0.0	0.0	0.0
Total	8,757	10,964	9,984	100.0	100.0	25.2	-8.9
(Arrival by Purpose of Visit)							
Tourist	4,620	5,872	4,053	53.6	40.6	27.1	-31.0
Business and Professional	3,958	4,732	5,397	43.2	54.1	19.6	14.1
Others and not specified	179	360	534	3.3	5.3	101.1	48.3
Total	8,757	10,964	9,984	100.0	100.0	25.2	-8.9
(Top-Ten Countries of Passenger Arrivals)							
Thailand	4,601	5,895	4,141	53.8	41.5	28.1	-29.8
China (PRC)	1,707	2,058	2,731	18.8	27.4	20.6	32.7
Vietnam	1,019	1,123	562	10.2	5.6	10.2	-50.0
United States of America	210	323	471	2.9	4.7	53.8	45.8
South Korea	195	257	338	2.3	3.4	31.8	31.5
Taiwan	215	216	293	2.0	2.9	0.5	35.6
France	67	99	222	0.9	2.2	47.8	124.2
Indonesia	205	277	177	2.5	1.8	35.1	-36.1
Malaysia	119	134	122	1.2	1.2	12.6	-9.0
Philippines	99	82	113	0.7	1.1	-17.2	37.8
Others	320	500	814	4.6	8.2	56.3	62.8
Total	8,757	10,964	9,984	100.0	100.0	25.2	-8.9

Source: Ministry of Tourism

Table 23: Cambodia's Imports and Exports

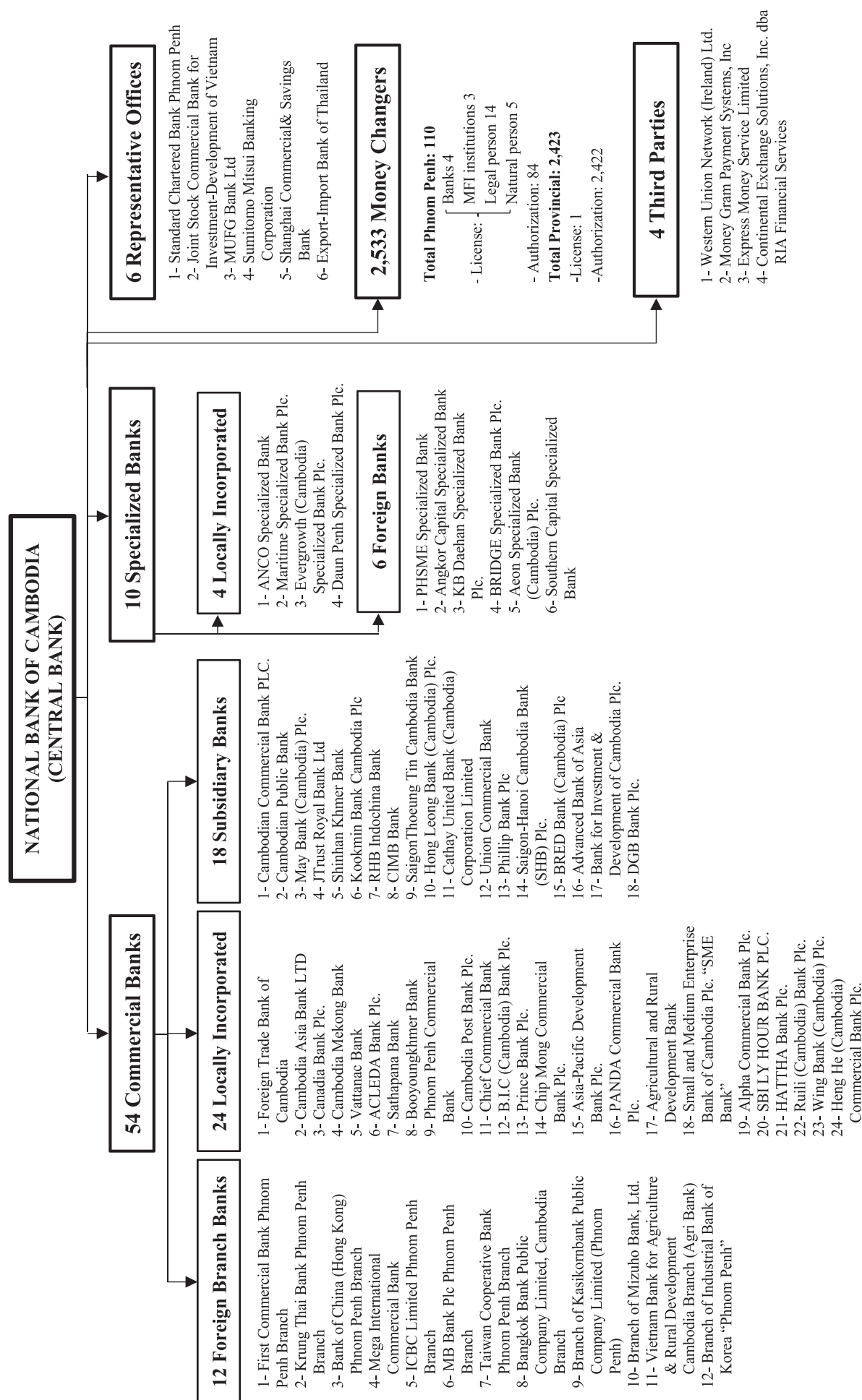
(In Billion KHR)

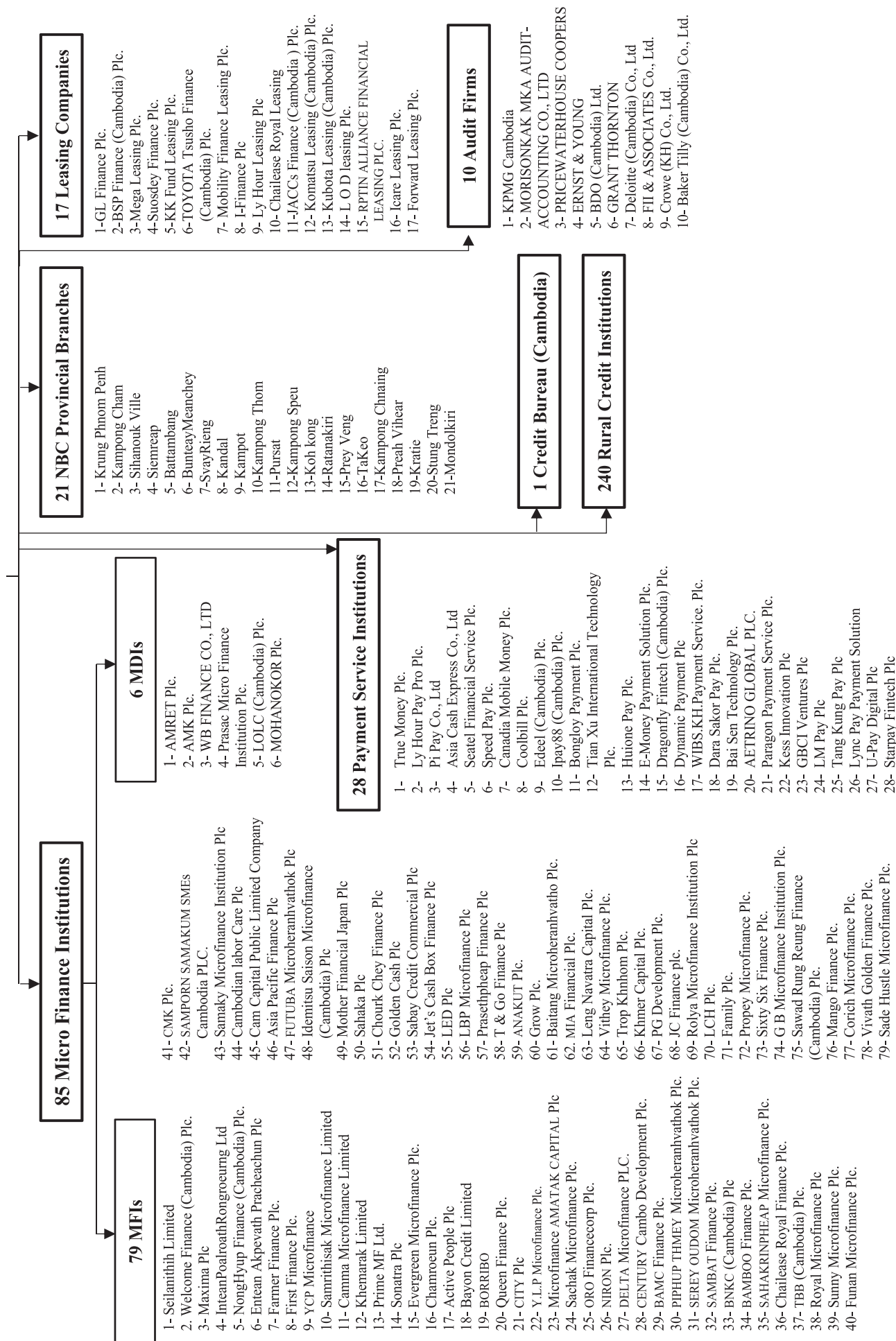
	2021			Change in Billion KHR		Change in %	
	May	Jun	Jul	Jun/May	Jul/Jun	Jun/May	Jul/Jun
Imports by Commodity							
Medicine	135.9	192.3	469.4	56.5	277.0	41.5	144.0
Cigarette	60.0	113.2	137.1	53.1	23.9	88.5	21.1
Food and Beverage	297.6	302.9	281.7	5.4	-21.3	1.8	-7.0
Equipment Construction	411.3	504.3	454.4	93.0	-49.9	22.6	-9.9
Cement	15.6	11.9	6.9	-3.7	-5.0	-23.8	-42.4
Steel	99.4	120.8	99.6	21.4	-21.1	21.5	-17.5
Phones	5.8	9.5	7.2	3.8	-2.4	65.2	-24.9
T.V	1.7	0.9	3.5	-0.8	2.5	-45.8	271.3
Other Electronic Equipment	202.8	224.4	262.4	21.6	38.0	10.7	16.9
Garment	243.4	223.6	216.1	-19.8	-7.5	-8.1	-3.3
Fabric	1,990.9	1,701.2	1,629.6	-289.8	-71.5	-14.6	-4.2
Vehicle	560.9	516.4	442.2	-44.5	-74.3	-7.9	-14.4
Equipment of Cold	17.8	22.4	23.7	4.6	1.3	26.0	5.6
Gold	864.4	1,459.9	1,150.1	595.6	-309.8	68.9	-21.2
Oil	805.4	769.1	756.8	-36.3	-12.4	-4.5	-1.6
Fertilizer	140.8	145.9	115.3	5.1	-30.6	3.6	-21.0
Others	3,256.5	3,503.9	3,456.8	247.4	-47.1	7.6	-1.3
Total Imports	9,110.1	9,822.7	9,512.6	712.5	-310.1	7.8	-3.2
Exports by Commodity							
Garment	1,705.8	2,519.8	3,830.2	814.0	1,310.4	47.7	52.0
Footwear	418.3	494.8	583.3	76.5	88.5	18.3	17.9
Other Textile Product	495.7	673.9	873.6	178.2	199.7	35.9	29.6
Electrical Part	324.8	537.0	759.6	212.2	222.6	65.3	41.4
Vehicle and Bicycle Part	37.7	21.6	55.6	-16.1	34.0	-42.8	157.8
Bicycle	222.7	162.1	267.8	-60.6	105.8	-27.2	65.3
Wood Products	167.5	175.0	176.0	7.5	1.0	4.5	0.6
Rice	108.6	137.4	87.9	28.8	-49.5	26.5	-36.0
Rubber	89.1	100.6	139.0	11.5	38.4	12.9	38.1
Fish and Other Agricultural Products	124.6	81.2	2.4	-43.4	-78.8	-34.8	-97.0
Others	1,005.4	951.5	1,068.7	-53.9	117.2	-5.4	12.3
Total Exports	4,700.2	5,854.9	7,844.1	1,154.7	1,989.2	24.6	34.0

*Source: General Department of Cambodia Customs and Excise*** Revised Data*

Table 24: THE BANKING SYSTEM IN CAMBODIA

As of 31 July, 2021





អ៊ីនធឺណិត
INTERNET

: www.nbc.org.kh គឺជាគេហទំព័ររបស់ធនាគារជាតិនៃកម្ពុជា ។ ទិន្នន័យថ្មីៗក្នុងគេហទំព័រ និងទិន្នន័យបន្តបន្ទាប់ទៀត ត្រូវបាននិងកំពុងដាក់បញ្ចូលទៅក្នុងប្រព័ន្ធទិន្នន័យ តាមធនធាន ដែលមាន ។ លើសពីនេះទៀត គេហទំព័រនេះ គឺជាទីតាំងដ៏ល្អបំផុតដើម្បីទទួលបានទិន្នន័យសង្ខេប នៃការចេញផ្សាយចុងក្រោយបង្អស់ ។

www.nbc.org.kh is the National Bank of Cambodia website. The website new data and metadata are progressively being added to the database, as resources permit. This website is the best place to start for access to summary data from the latest publications.

សេវាព័ត៌មាន
INFORMATION SERVICE

: បុគ្គលិករបស់នាយកដ្ឋានស្ថិតិ នៃធនាគារជាតិនៃកម្ពុជា អាចជួយចង្អុលបង្ហាញ ឬណែនាំ អ្នកប្រើប្រាស់ក្នុងការស្វែងរកទិន្នន័យតាមតម្រូវការ ។ ការបោះពុម្ពផ្សាយរបស់ធនាគារជាតិនៃកម្ពុជា អាចរកជាប់បាន ហើយសេវាលើការជាប់ជាប្រចាំក៏អាចរៀបចំបានដែរ ។ ចំពោះសេវាលើទិន្នន័យ ពិសេសផ្សេងទៀតក៏អាចរកបានផងដែរ តាមរយៈការមកជាប់ព្រឹត្តិបត្រដោយផ្ទាល់ ។

The Statistics Department staff of the National Bank of Cambodia can assist users in addressing their data requirements. The National Bank of Cambodia publications are available for sale and subscription services can be arranged. Other special data services are also available, on a user pays basis.

អាសយដ្ឋានទំនាក់ទំនង
CONTACT DETAILS

ធនាគារជាតិនៃកម្ពុជា

NATIONAL BANK OF CAMBODIA

នាយកដ្ឋានស្ថិតិ

Statistics Department

អគារលេខ ៦៩-៧០ មហាវិថីហាណូយ (លេខ១០១៩) ភូមិបាយ៉ាប សង្កាត់ភ្នំពេញថ្មី

ខណ្ឌសែនសុខ រាជធានីភ្នំពេញ

#69-70, Hanoi Blvd. (1019), Phum Bayab, Sangkat Phnom Penh Thmei, Cambodia

អ៊ីម៉ែល : statistics@nbc.org.kh

E-mail : statistics@nbc.org.kh

ទូរស័ព្ទ : (៨៥៥) ២៣ ៧២២ ៥៦៣ – ១១១៥

Telephone: (855) 23 722 563 – 1115

ទូរសារ : (៨៥៥) ២៣ ៤២៦ ១១៧

Facsimile : (855) 23 426 117



ISSN 2074-5680

ផលិតដោយ ធនាគារជាតិនៃកម្ពុជា

Produced by the National Bank of Cambodia